



Annual Report



The Manitoba Museum
2013/2014



Lake Winnipeg: Shared Solutions

On World Water Day, March 22, 2014, The Manitoba Museum launched *Lake Winnipeg: Shared Solutions*, one of the most ambitious exhibits in the history of the Science Gallery. The lake was named the world's most threatened lake in 2013 by the Global Nature Fund. Shared Solutions asks the question, "How would you fix Lake Winnipeg?"

The centrepiece of this interactive exhibit is a high-tech computer simulation of the Lake Winnipeg watershed, allowing visitors to make decisions that affect the health of the lake. As lake stewards, visitors must decide which problems to prioritize, and which solution has the desired effect.

Lake Winnipeg: Shared Solutions is the first \$1 million plus exhibit to be built in the Museum's Science Gallery and received financial and in-kind (lead) support from the

International Institute of Sustainable Development, Manitoba Hydro, Royal Bank Blue Water Project and additional support from Manitoba Pork, Environment Canada's EcoAction Community Funding Program, Manitoba Education and Literacy, Lake Winnipeg Foundation and Canadian Wildlife Federation.

The Lake Winnipeg Exhibit Advisory Committee was composed of representatives from Manitoba Education, Manitoba Hydro, Talking Water Project, Lake Winnipeg Foundation Science Committee, Keystone Agricultural Producers, International Institute for Sustainable Development, Environment Canada, Lake Friendly, Richardson International Limited, Manitoba Pork Council and The Manitoba Museum.

AWARDS

Nancy ANDERSON, Collections Assistant (Human History)

Award of Merit, Association of Manitoba Museums

Javier SCHWERSENSKY, Director of Marketing, Sales & Programs

Illuminis Award – Excellence in Executive Development, Universidad de Ciencias Sociales y Empresariales [University of Social Sciences and Business], Buenos Aires, Argentina

Betsy THORSTEINSON, Diorama Artist

Award of Distinguished Service, Canadian Museums Association (CMA)

“DINOSAURS UNEARTHED” MARKETING CAMPAIGN

Manitoba Tourism Award for Marketing Excellence, Travel Manitoba

ALLOWAY WORLD EXHIBITS (AWE)

Spirit of Winnipeg Award, Not-For-Profit Category, The Winnipeg Chamber of Commerce

APPOINTMENTS

Shauna CARMICHAEL, Planetarium/ Science Gallery Animator

Board of Directors, Interpretation Canada

Adèle HEMPEL, Director of Research, Collections & Exhibits

Director, Board, Alliance of Natural History Museums of Canada; Chair, Nominations; Chair, Special Exhibit Project (2017)

Treasurer, Association of Manitoba Museums; Chair, Long-range Planning Committee

Claudette LECLERC, Chief Executive Officer

Board of Directors, Winnipeg Chamber of Commerce

Board of Directors, Manitoba Arts and Cultural Alliance

Committee Member, Manitoba Chamber of Commerce – Tourism Council

Committee Member, Winnipeg Downtown BIZ – Main Street Advisory Committee

Dr. Maureen MATTHEWS, Curator of Ethnology

Adjunct Professor, Department of Anthropology, University of Manitoba

Dr. Randall MOOI, Curator of Zoology

Adjunct Professor, Department of Biological Sciences, University of Manitoba

Member, Editorial Board, American Society of Ichthyologists and Herpetologists

Member, Steering and Technical Committees for the Manitoba Breeding Bird Atlas; Regional Coordinator for the Northern Interlake Region

Kathy NANOWIN, Manager, Collections and Conservation

Regional Representative, Canadian Association for Conservation of Cultural Property

Dr. Diana Bizecki ROBSON, Curator of Botany

Board Member/Education Director, Manitoba Association of Plant Biologists

Member, Collections Sub-Committee, Alliance of Natural History Museums in Canada

Dr. Roland SAWATZKY, Curator of History

Adjunct Professor, Department of Anthropology, University of Winnipeg

Dr. Graham YOUNG, Curator of Geology and Paleontology

Adjunct Professor, Department of Geological Sciences, University of Manitoba

Board Member, Canadian Geological Foundation

External Ph.D. Thesis Examiner, University College Dublin, Ireland

Publicity Chair, Geological Association of Canada-Mineralogical Association of Canada 2013 ; Conference – Winnipeg

RETIREMENTS

Karen POOLEY, Business Office Manager

The Manitoba Museum would like to recognize Karen Pooley for 31 years of service to the institution. Karen started at The Manitoba Museum in February 1982 as the Business Office Clerk. She soon moved into other positions including Information/Receptionist, Business Office/Inventory Clerk, Administrative Secretary, and Junior Accountant. In 1989, she permanently stepped into the role of Business Office Manager and she held that position until she retired in 2013. Karen was a stabilizing presence at the Museum; through three decades she saw the Museum grow from “pencil and paper” to computerized systems.

GOVERNANCE

BOARD OF GOVERNORS

Jeoff Chipman, *Chair*
Scott Craig, *Vice-Chair*
Ken Ross, *Secretary*
Bob Brennan, *Treasurer*
Nancy Anderson
Bill Baines
Sangeet Bhatia
Kevin Brownlee
Lawrie Cherniack
Loren Cisyk
James Cohen
Don Epstein
Charles Henaire
Penny McMillan
Hubert Mesman
Emőke Szathmáry

EXECUTIVE COMMITTEE

Scott Craig, *Chair*
Sangeet Bhatia
Bob Brennan
Jeoff Chipman
Loren Cisyk
Penny McMillan
Ken Ross

NOMINATING & GOVERNANCE COMMITTEE

Sangeet Bhatia, *Chair*
Nancy Anderson

Bob Brennan
Jeoff Chipman
Scott Craig
Don Epstein
Ken Ross

Standing Committees

FINANCE COMMITTEE

Bob Brennan, *Chair*
Sangeet Bhatia, *Vice-Chair*
Kevin Brownlee
Scott Craig
Ken Ross
Emőke Szathmáry
Jeoff Chipman (*ex-officio*)

HUMAN RESOURCES & COMPENSATION COMMITTEE

Penny McMillan, *Chair*
Loren Cisyk
Sangeet Bhatia
Scott Craig (*ex-officio*)
Jeoff Chipman (*ex-officio*)

REVENUE COMMITTEE

Loren Cisyk, *Chair*
Penny McMillan, *Vice-Chair*
Nancy Anderson
Bill Baines
James Cohen

Hubert Mesman
Scott Craig (*ex-officio*)
Jeoff Chipman (*ex-officio*)

AD HOC Committees

PENSION COMMITTEE

Elizabeth Chipilski, *Chair*
Jack Dubois
Penny McMillan
Cindi Steffan
David Thompson
Bert Valentin

INVESTMENT COMMITTEE

Scott Craig, *Chair*
Bob Brennan
Jeoff Chipman
Gary Coopland
Charlie Curtis
Bob Darling

POLICY PROJECT

Don Epstein, *Lead*
Lawrie Cherniack

CAPITAL RENEWAL PLANNING COMMITTEE

Jeoff Chipman, *Chair*
Sangeet Bhatia
Scott Craig
James Cohen

Ken Ross
Emőke Szathmáry

GOVERNMENT RELATIONS COMMITTEE

Hubert Mesman, *Chair*
Jeoff Chipman
Scott Craig
Bob Brennan
Kevin Brownlee
Charles Henaire

The Manitoba Museum Foundation Incorporated

BOARD OF DIRECTORS

Ken Ross, *President*
Bill Baines
Jeoff Chipman
Barbara Crutchley
Gus Leach
Art Pearson
Jennifer Rattray

RESEARCH ADVISORY COMMITTEE

Dr. Jill Oakes, *Chair*
Jay Anderson
Dr. William Rannie
Dr. Geoffrey Scott

Table of Contents

Message from the CEO and Board Chair	4
Museum Staff	5
Exhibits	6
Programs and Interpretation	9
Collections	13
Research	17
Volunteer Resources	20
Community Partners	22
Museum Community Partners	24
Annual Giving	26
The Manitoba Museum Foundation Inc.	30
Financial Statements	31

Detail from *Aschikibokahn*
Mini-Diorama: A Place for Every Season

Message from the CEO and Board Chair



We are extremely pleased to report that the 2013–2014 fiscal cycle was another successful year at The Manitoba Museum. From opening cutting-edge exhibitions to receiving community awards for the economic and social impact of our institution, we are truly humbled by the level of support and recognition that the work of the Museum has garnered.

One of the highlights of the year was the opening of *Lake Winnipeg: Shared Solutions* in the Science Gallery, as well as the successful temporary exhibit *Wrapped: The Mummy of Pesed* reaching a record number of school visitors. The Manitoba Museum was the recipient of Travel Manitoba's Award of Marketing Excellence and the Winnipeg Chamber of Commerce Spirit Award in the non-profit category for our Alloway World Exhibits program.

The accolades were not only from awards, but also Manitobans showed their support by visiting our Museum. Over the past 12 months, we have recorded 319,531 visits, with over 97,000 of those visits being students coming to take part in curriculum-based programs. This was our 22nd consecutive year with a balanced budget, as we continued our tradition of community engagement, innovation, responsible financial stewardship and positive economic impact. The Manitoba Museum generates \$13.7 million in direct annual economic impact and last year provided free Museum access to over 40,000 Manitobans through targeted outreach programs.

On World Water Day, March 22, 2014, the Museum launched *Lake Winnipeg: Shared Solutions*, the most ambitious exhibit in the history of our Science Gallery. The centrepiece of this interactive exhibit is a high-tech computer simulation of the Lake Winnipeg watershed that allows visitors to make decisions which either positively or negatively affect the health of the lake, named the world's most threatened in 2013 by the Global Nature Fund. *Lake Winnipeg:*

Shared Solutions is the most advanced watershed simulator in North America.

An important aspect of our role in the community is the development of community exhibitions, led mostly by volunteer community members that chose to use our galleries to share their important historical stories with our visitors. In the past year, we were proud to feature two exhibits *Trees of Life* and *Fort Rouge: Commemorating 275 Years of French Presence in Manitoba* in our Discovery Room and *The Beat of Kenya* and *Berens Family Collection* in our new acquisitions case.

The Museum hosted *Wrapped: The Mummy of Pesed* in Alloway Hall. This was the Museum's third year for its Alloway World Exhibits partnership program. Thanks to the generosity of MacDon Industries, The Winnipeg Foundation and new partner Power Corporation, our new and innovative travelling exhibition fund continues to draw an increasing number of visitors. *Wrapped* was seen by more than 40,000 people, and saw the best school attendance numbers ever, with 14,260 students learning the fine art of mummifying carrot-sized sarcophagi, reading hieroglyphs and making clay amulets. The private-sector leadership of this program is one of a growing number of corporate partnerships that the Museum has in place, which allow the Museum to bring blockbuster shows to Winnipeg.

Our many volunteers astound us with their commitment and generous spirit. In the past year, 307 volunteers have provided 17,243 hours of support to the Museum. From delivering education and public programs to supporting

curators in the lab and on research trips, to working in the Museum gift shop to being on the Board of Governors, our volunteers do it all. We simply couldn't do any of this without them. To everyone who visited, donated, sponsored and joined the Museum in the previous 12 months, and to our dedicated Museum team of staff, please accept our heartfelt thank you!

The Manitoba Museum remains fully committed to supporting our communities, commissioning innovative research and collections, developing exciting programs, attracting the best possible exhibitions and renewing our galleries. In the next 12 months we will be bringing National Geographic's *Real Pirates: The Untold Story of the Whydah from Slave Ship to Pirate Ship*, the first time this exhibit will be seen in Canada.

The Museum is working diligently to advance its Capital Renewal Plan and we anticipate an announcement on this project in the near future. We thank you for your continued support and we look forward to an exciting future as we continue to meet the needs of our community and create a tangible economic impact in our Province.

Claudette Leclerc
CEO

Jeff Chipman
Museum Chair

MUSEUM STAFF

OFFICE OF THE EXECUTIVE DIRECTOR

Claudette Leclerc *Executive Director*
Martina Hutchison *Executive Assistant*

FINANCE AND OPERATIONS

David Thompson *Director*
Brian Lenius *I.T. Systems Administrator*
Hans Thater *Audio-Visual Specialist*
Stephanie Whitehouse *Exhibit Designer*

Business Office

Aimee Primolo *Business Office Manager*
Kathy Moran *Business Office Assistant*

Operational Services

Marc Hébert *Carpenter/Cabinet Maker*
Bob Peacock *Exhibit Technician*
Debbie Thompson *Exhibit Assistant*
Betsy Thorsteinson *Diorama Artist*
Bert Valentin *Technical Supervisor*
Sean Workman *Museum Technical Assistant*

FUNDRAISING AND DEVELOPMENT

Ashleigh Czynryj *Membership & Development Coordinator*
Pamela Moat *Data Management & Development Specialist*
Roberta Pauls *Development & Special Events Manager*
Cindi Steffan *Grants & Information Services Manager*

HUMAN RESOURCES

Elizabeth Chipilski *Director*
Lana Adeleye-Olusae *Human Resources Officer*
Noreen Hees *Volunteer Resources Manager*

MARKETING, SALES AND PROGRAMS

Javier Schwersensky *Director*
Wendy Bilous *Museum Shop Manager*
Karen Gautron *Museum Shop Merchandiser*
Ashley Hoeppner *Marketing Assistant*
Greg Klassen *Marketing & Communications Manager*
Lila Knox *Manager, Programs*
Nicole Maier *Programs & Reservations Coordinator*
Liette Robert *Marketing & Sales Representative*
Scott Young *Manager, Science Communication & Visitor Experiences*

Museum Gallery Programs

Jérôme Marchildon *Program Developer*
Anya Moodie-Foster *Program Developer*
Cortney Pachet *Northern Kit Developer*
Shauna Carmichael *Museum Animator*
Ernie Creasy *Museum Animator*
Janèle Fréchette *Museum Animator*
Nancy Khrabchuk *Museum Animator*
Jocelyne Lavack *Museum Animator*
Tom Lurvey *Museum Animator*
Gary Peak *Museum Animator*
Len VanRoon *Museum Animator*
Rachelle Vermette *Museum Animator*

Planetarium/Science Gallery Programs

Mike Jensen *PL/SG Programs Supervisor*
Shauna Carmichael *PL/SG Animator*
Mylène Cooney *PL/SG Animator*
Ashley Hoeppner *PL/SG Animator*
Leigh McKinnon *PL/SG Animator*
Kevin Mogk *PL/SG Animator*
Cortney Pachet *PL/SG Animator*
Raymond Saltel *PL/SG Animator*
Len VanRoon *PL/SG Animator*
Sean Workman *PL/SG Animator*
Sara Arenson *SG Assistant*
Victoria Ho *SG Assistant*

Sleepover Programs

Stephanie Chu *Sleepover Team Leader*
Zoë Leclerc-Kennedy *Sleepover Team Leader*
Heather Nelson *Sleepover Team Leader*
Kelly Pearce *Sleepover Team Leader*
Austin Valentin *Sleepover Team Leader*
Stephanie Chipilski *Sleepover Group Leader*
Steven Hees *Sleepover Group Leader*
Susan Jozwiak *Sleepover Group Leader*
Rumbi Muvingi *Sleepover Group Leader*
Cristina Poepl *Sleepover Group Leader*
Tripti Prasad *Sleepover Group Leader*
Melissa Senden *Sleepover Group Leader*
Nicole Szczyz-Keller *Sleepover Group Leader*
Alana Wilcox *Sleepover Group Leader*

Visitor Services

Fiona Sime *Manager, Visitor Services*
Dominique Guyot *Receptionist*
Laura Bergen *Visitor Services Advocate*
Christopher Calesso *Visitor Services Advocate*

Hannah Craig *Visitor Services Advocate*
Nicole Dupas *Visitor Services Advocate*
Karen Gautron *Visitor Services Advocate*
Steven Hees *Visitor Services Advocate*
Josh Jones-Horrock *Visitor Services Advocate*
Zem Lockhart *Visitor Services Advocate*
Vanessa Lopez *Visitor Services Advocate*
Luke Majowski *Visitor Services Advocate*
Janelle Metcalfe *Visitor Services Advocate*
Maxine Queen *Visitor Services Advocate*
Taryn Selch *Visitor Services Advocate*
Kayleigh Speirs *Visitor Services Advocate*

RESEARCH, COLLECTIONS AND EXHIBITS

Adèle Hempel *Director*
Hanna Peters *Exhibits Manager*
Claire Zimmerman *Administrative Assistant*

Curators

Dr. Diana Bizecki Robson *Curator of Botany*
Kevin Brownlee *Curator of Archaeology*
Amelia Fay *Curator of the HBC Museum Collection*
Dr. Maureen Matthews *Curator of Ethnology*
Dr. Randall Mooi *Curator of Zoology*
Dr. Roland Sawatzky *Curator of History*
Dr. Graham Young *Curator of Geology & Paleontology*

Collections and Conservation

Kathy Nanowin *Manager, Collections & Conservation*
Betty-Ann Penner *Collections Registrar*
Ellen Robinson *Conservator*
Carolyn Sirett *Conservator*
Nancy Anderson *Collections Assistant (Human History)*
Cortney Pachet *Cataloguer (Human History)*
Janis Klapcecki *Collections Specialist (Natural History)*
Karen Sereda *Cataloguer (Natural History)*
Debbie Thompson *Collections Technician (Natural History)*
Robert Byzio *Cataloguer (Archaeology)*
Laura Hebert *Cataloguer (Archaeology)*
Kayleigh Speirs *Cataloguer (Archaeology)*
Chris Whaley *Cataloguer (Archaeology)*

Exhibits

Mummy of Pesed ("The Shining One"), from *Wrapped: the Mummy of Pesed*, Alloway World Exhibits (AWE)

The Museum hosted its third major travelling exhibit, *Wrapped: the Mummy of Pesed*. Launched in 2011, Alloway World Exhibits (AWE) was designed to assist the Museum in booking large international touring exhibitions. Numbers of visiting school groups reached a new record as a result of the complementary new Planetarium show, *Stars of the Pharaohs*, and stellar programs developed for *Wrapped: the Mummy of Pesed*.

New permanent exhibits include *Lake Winnipeg: Shared Solutions*, an interactive exhibit on Lake Winnipeg in the Science Gallery, and the *Aschikibokahn* mini-diorama, a treasure created by the Museum's diorama artist, 20 years in the making. These, along with new temporary exhibits mounted by staff and community partners, added to our visitors' choice of options and experience exploring the Museum Galleries, Science Gallery and Planetarium.

INCOMING TRAVELLING EXHIBITS

Alloway World Exhibits: Alloway Hall

Wrapped: The Mummy of Pesed

October 25, 2013 – April 6, 2014
External Exhibit

This third major exhibit sponsored by the Alloway World Exhibits (AWE) program was produced by AMSC Research LLC, of Carlisle, PA. The exhibit unravels the mystery behind mummification, and Western fascination with ancient Egyptian culture. The mummy of Pesed ("The Shining One") and her coffin were specially loaned

for the exhibit by Westminster College, New Wilmington, PA. The exhibit featured more than 60 ancient Egyptian antiquities, CT scans and forensic facial reconstructions of Egyptian mummies.

Science Gallery

Living in Space

December 20, 2012 – February 18, 2014
External Exhibit

Extended for a longer period in the Science Gallery, this bilingual interactive exhibit, produced by the Canadian Space Agency (CSA), explored the challenges of daily life in space.

Urban Corridor

The Odyssey of Wawel's Treasures 1939 – 1961

Consulate of the Republic of Poland in Winnipeg
November 26, 2013 – May 14, 2014
External Exhibit

Photo posters captured the compelling story of Polish cultural treasures temporarily transported to Canada for safekeeping during World War II, before they were returned home to Wawel Castle.



Upper: Detail of "Umi, A Child Mummy from Roman Times," from *Wrapped: the Mummy of Pesed*

Lower: *Living In Space* exhibit, Science Gallery

Museum Foyer

Sailing on the Empress of Ireland

Site historique maritime
de la Pointe au Père
July 4 – 13, 2013
External display

This national touring display stopped in Winnipeg on its cross-country tour. The Canadian Pacific-owned vessel, the RMS Empress of Ireland, brought thousands of immigrants to Canada, and sank in the St. Lawrence River on May 29, 1914.

OUTGOING TRAVELLING EXHIBITS

The Manitoba Museum has a limited number of popular travelling exhibits for circulation.

The Vikings: Master Mariners, Traders, Colonists and Artisans

Huron County Museum
Goderich, Ontario
May 13 – August 31, 2013

The Hjemkomst Center

Historical and Cultural Society
of Clay County
Moorhead, Minnesota USA
September 24, 2013 – February 28, 2014

Portraits of the North

Peterborough Museum & Archives
Peterborough, Ontario
December 15, 2013 – March 23, 2014

TEMPORARY DISPLAY

The Royal Proclamation of 1763 Commemorative Display

Event hosted by the Treaty Relations
Commission of Manitoba
Mobile temporary display
The Manitoba Museum
October 4 – 5, 2013

COMMUNITY EXHIBITS

Discovery Room

Fort Rouge: Commemorating 275 Years of French Presence in Manitoba

May 2, 2013 – September 15, 2013
Community Exhibit

Produced by La Compagnie de La Vérendrye, this exhibit commemorated the 275th anniversary of the exploration voyages that led to the building of the first fort in Winnipeg. Fort Rouge was constructed at the forks



Diverse artefacts featuring the use of wood, from the *Trees of Life* exhibit, Discovery Room

of the Red and Assiniboine Rivers in 1738, by the French-Canadian explorer Pierre Gaultier de Varennes, Sieur de La Vérendrye.

Urban Corridor

Ptsim Finds Her Miskanow

September 9 – October 11, 2013
Highwater Press
Community Exhibit

This exhibit featured original watercolour illustrations by artist Leonard Paul for the new publication, *Ptsim Finds Her Miskanow* (Highwater Press). Author William Dumas' story is inspired by an earlier archaeological research project and publication of The Manitoba Museum.

NEW EXHIBITS

New exhibits, involving new community partners and refurbishments, enhanced the visitor's experience in the Museum and Science Galleries, and in the Museum Foyer.

Discovery Room

Trees of Life

October 11, 2013 – April 13, 2014
Internal Exhibit

This multidisciplinary exhibit told a story about the wonder of wood and the value of trees to people and other living organisms. The exhibit demonstrated the diversity and interdependence of life associated with trees, using specimens and artefacts

from natural and human history collections that originated from around the world: fungus, insects, woodpeckers, beavers, amber and fossilized wood, together with tapa cloth, a cedar hat, wooden sandals, and many other items.

Main Foyer

The Beat of Kenya

May 13 – November 3, 2013
Internal New Acquisition Display

Showcasing acquisitions in 2011, these handcrafted drums and stringed instruments were made from natural skin, wood and synthetics in the 1960s by musicians from the Luo and Luhya tribes, two of the three largest ethnic groups in Kenya.

Memorial Plaque

November 4 – 17, 2013
Commemorative Display

In recognition of Remembrance Day, a special temporary display featured a plaque presented to the Museum by The Queen's Own Cameron Highlanders, including a fragment of the marble base of the Memorial of the Fallen, repatriated to Canada from Afghanistan.

Prairie Pollination

November 4, 2013 – May 4, 2014
Internal New Acquisition Display

This exhibit displayed exquisite plant models and voucher specimens from Botany and Zoology, collected to

document the occurrence and interactions of species. The display is a forerunner to the Museum's virtual exhibition on prairie pollination, set to launch next fiscal.

Berens Family Collection

November 5, 2012 – November 3, 2013
Internal New Acquisition Display

Extended for an additional period, this display featured significant Aboriginal materials collected and preserved by the family of Chief Jacob Berens, including Treaty Medal No. 5, Chiefs' coats and other important heirlooms.

Orientation Gallery

Kayasochi Kikawenow:

Our Mother from Long Ago

September 9, 2013 – April 2014

Internal Book Publication Display

A supplementary exhibit complemented the community exhibit of artwork from the newly launched book, *Ptsim Finds Her Miskanow*.

Parklands/Mixed Woods Gallery

Roseau River Pow Wow

November 28, 2013

Internal Display

New labels were produced for photographs of a Pow Wow at Roseau River.

Ashkibokahn Mini-diorama:

A Place for Every Season

January 16, 2014

Internal Exhibit

A spectacular new mini-diorama depicts an ancient Native camp site in western Manitoba. It follows an Anishinaabe family of the late Woodland period, about 800 years ago, moving across the land from the Duck Mountains to the shores of Lake Winnipegosis, from winter to summer. An incredible blend of art and research, this beautiful mini-diorama takes viewers to another time and place, to see fish harvesting using weirs and harpoons, winter lodging, toboggans and maple sugaring. The diorama is based on traditional knowledge and oral history, showing how available resources were maximized and a part of daily routines.



Diorama artists Betsy Thorsteinson and Deborah Thompson installing new *Ashkibokahn* mini-diorama in lower Parklands/Mixed Woods Gallery

Elk Diorama

March 21, 2014

Internal Exhibit

A pilot project, with new interpretive content developed in a touch-screen format, replaced a diorama key and two curatorial notebooks. This medium will be evaluated and modified as the technology is introduced into other galleries. Redesign of the railing enhanced themes with additional natural history specimens. Insects in various life stages illustrate different ways they survive Manitoba's winters. Two touchable tree sections explain the difference between softwood and hardwood, and show how to interpret growth rings.

Science Gallery

Black Brant 5C Rocket

April 30, 2013

Internal Exhibit

An iconic focal point in the Science Gallery, the Black Brant 5C rocket illustrates the importance of Manitoba's aerospace industry, a significant part of our science and engineering history. Designed and built by Magellan Aerospace (formerly Bristol Aerospace), of Winnipeg, Black Brant rockets were used by space agencies including NASA, and scientists from many countries. They

were launched for studies of northern lights, solar eclipses, space radiation and other research, making the Black Brant one of the most successful small rocket programs in the world.

Lake Winnipeg: Shared Solutions

March 22, 2014

Internal Exhibit

The "Watershed of the Future" simulator is at the heart of a cutting-edge interactive exhibit on the Lake Winnipeg basin eco challenge, developed in partnership with the International Institute for Sustainable Development and community stakeholders. Visitors play the role of social actors and make choices concerning factors that affect the watershed, health of the lake, economy and quality of life: such as agriculture, development, tourism, and other activities. The game is won by finding a sustainable compromise that will counteract modern civilization's challenges to this large body of fresh water. The exhibit was produced by Aldrich Pears, Inc. and NGX Interactive (Vancouver, BC), and fabricated by the Taylor Group (Toronto, ON).

VIDEO EXHIBITS

Seven videos were produced for the *Prairie Pollination* virtual exhibit:

- Introduction
- Mystery of the Western Prairie Fringed
- Orchid
- Saving a Species
- Endangered Moths and Butterflies
- Webs of the Western Silvery Aster
- The Value of Fescue Prairie
- The Manitoba Museum's Collection Vault



Interactive "Watershed of the Future" simulator in the Science Gallery's *Lake Winnipeg: Shared Solutions* exhibit, opened on World Water Day (March 22nd)

Programs and Interpretation

Ice is found on Earth near the poles, but also on other worlds in our solar system. The Planetarium program *Ice Worlds* investigates this link between our planet and the cosmos

Interpretation is about creating a connection between content and understanding. At The Manitoba Museum, this can take many forms, from the structured Guided Highlight Tours offered on weekends to the volunteer staffing of the Nonsuch. Programs are designed to address the needs of the widest range of groups possible. More than 97,000 students attended education programs at the Museum, which are sponsored by Great-West Life, an annual sponsor for over 40 years!

YURI'S NIGHT

Yuri's Night, a celebration of the human spirit of exploration, was held in the Science Gallery and Planetarium on April 12, 2013. The worldwide space party celebrates the first human flight into space by Yuri Gagarin on April 12, 1961. The Winnipeg event featured science and space presentations, DJs and dancing under the Planetarium dome.

MANITOBA DAY

The Museum celebrated its second annual Manitoba Day on May 11, 2013. Thanks to generous sponsor,



One of four entries in our 1st annual Cake-itoba Contest, this beautiful cake came from Winnipeg's Dolce Bake Shop

the Manitoba Liquor and Lotteries Commission, staff and volunteers were able to offer another fabulous "Free Day" for thousands of visitors. A wide range of activities included costumed interpreters, a bison scavenger hunt and several spectacular Planetarium shows with the new All-Dome digital projection system. Member of Parliament Steven Fletcher helped kick off the celebration and sport fans were also able to meet Olympic Silver Medalist in Women's Rowing, Janine Hanson. As well, the creativity of four local bakeries was on full display with our Manitoba Day cake contest.

NATIONAL ABORIGINAL DAY

National Aboriginal Day was celebrated at The Forks National Historic Site June 22, 2013, and The Manitoba Museum was one of the exhibitors. Kevin Brownlee, Curator of Archaeology, his wife Myra and daughter Meghan arrived at The Forks by paddling a 15-foot birch bark canoe down the Assiniboine River from their home. The beautiful new handmade birch bark canoe highlighted the exhibit, along



Kevin Brownlee and his family interpreted their wedding canoe at The Forks at National Aboriginal Day in June

with a display of bone tools, baskets and other traditional examples of technology.

DISCOVERY DAY CAMPS

The Museum hosted over 300 campers in two alternating weeks of day camps with different daily themes: Environment, Inventions, Chemistry, Natural Disasters Indigenous Cultures alternating with Astronomy, Archaeology/Paleontology, Weather, Human Anatomy and Animals. These week-long camps are particularly appealing to parents working downtown, since the pickup and drop-off times are flexible and timed around their work days.

BEHIND-THE-SCENES TOURS

In July and August, over 300 visitors got to tour our collections and research areas to see what goes on in parts of the Museum visitors are usually not able to access. They saw the process of diorama making, discovered treasures too delicate to put out on display, and got to learn about the current research of our curatorial team.

WRAPPED: THE MUMMY OF PESED

It has been Egyptomania all winter at the Museum! With the support of the Winnipeg Foundation, our staff developed three different hour-long ancient Egyptian-themed programs to enhance student visits to *Wrapped: The Mummy of Pesed* and support the grades three and eight curricula. Over 14,000 students participated in these programs and every available slot was booked before we were halfway through the run of the exhibit.

Grade three students learned about hieroglyphs, dressed up like ancient Egyptians, tried writing with rushes, tested wooden headrests and learned about the process of mummification by “mummifying” one of their classmates. Grade eight students made clay amulets, wrote in hieroglyphs and deciphered ancient Egyptian numbers. They also assisted with mummification demonstrations using life-sized mannequins kindly donated by St. John Ambulance and prepared over 5,500 mini



Author William Dumas reads from *Pisim Finds Her Miskanow*; a collaborative project involving among others the Museum's Curator of Archaeology Kevin Brownlee (background)

carrots for the afterlife by mummifying them and making carrot-sized sarcophagi to take them home in.

Weekend visitors were also able to participate in hourly mummification demonstrations, make an Egyptian musical instrument called a sistrum and learn to write their name in hieroglyphs.

NUIT BLANCHE

The Manitoba Museum celebrated Mad Men in Space on September 28, 2013, as part of Culture Days Manitoba. The 1,126 participants attended the five Planetarium Shows offered from 7 pm to 1 am, interacted with space-related exhibits in the Science Gallery, and grooved to a 1950s beat on a colourful dance floor, complemented with nostalgic video images of space

exploration. Big thanks to all local partners: Freeze Frame / On Screen Manitoba and Imagine Hobbies & Games who presented fun interactive, hands-on displays in the Concourse area. Special thanks to Hepcat Studios and UM Swing Dance Club who provided music and ambiance all night! David Moss, National Director of Culture Days, attended the event and said: “It was great to see first-hand how the Museum supports this unique and collective opportunity to reach and engage a young public so effectively.”

MUZZZEUM SLEEPOVERS

Over 2,600 excited students, teachers, leaders and parents explored the Galleries in a way that most people don't get to experience – at night – as part of the MuZZZEum Sleepover program, thanks for the generous support of Investors Group. Participants were treated to guided tours of the Museum Galleries, interactive storytelling, live science demonstrations, healthy evening and morning snacks and a Planetarium show. After blowing up air mattresses, unfurling sleeping bags and fluffing up their pillows, pyjama-clad campers then got the chance to explore the Museum in the dark with flashlights. This February, in partnership with Festival du Voyageur, we once again welcomed a number of rural and out-of-province schools in town for the annual winter event with special mid-week sleepovers, including groups from Northwest Ontario.



Behind The Scenes tours offer the public an opportunity to meet Curators at work. Here, Curator of History Roland Sawatzky unpacks a violin

CELEBRATING SUSTAINABILITY MONTH

October was the first Celebrating Sustainability month, an initiative of the Manitoba Education for Sustainable Development Working Group (MESDWG). Billed as an “unConference,” over 70 sustainability-themed events took place at different venues around Winnipeg throughout the month, all geared towards one of four themes – food, water, waste and energy. The Museum’s Science Programs Developer, Mike Jensen, was on the steering committee for this initiative, and participated in the opening and closing events at Red River College and University of Winnipeg. In addition, the Science Gallery’s Boeing Explore Science Zone hosted an interactive workshop on weekends in October called Green Science, which highlighted alternative energy activities and innovative waste-management ideas.



The Museum held two informal science evenings this year. These Café Scientifiques are a new way of bringing science and people together in a participatory way

Café Scientifique

The Manitoba Museum held its first ever Café Scientifique on November 28, 2013, at Finn’s Pub at The Forks. The event was titled *What can polar bears call home in a growing human landscape?* and was attended by 66 people. The panel of speakers was comprised of Bill Watkins from Manitoba Conservation and Stewardship, Dr. Jane Waterman

from the Department of Biological Sciences at the University of Manitoba, and Dr. Stephen Petersen from the Assiniboine Park Zoo and International Polar Bear Conservation Centre.

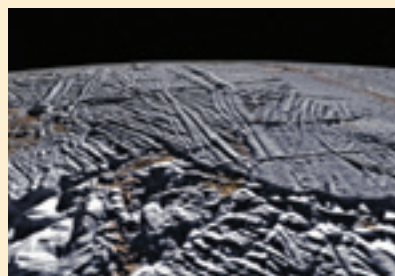
On December 5, 2013, the second Café Scientifique in the Arctic research series took place at Le Centre Culturel Franco-Manitobain. In response to the evening’s title: *Come break the ice and get to know your coldest friend, glacial ice*, the city received another blast of winter. Twenty-six hardy souls attended. The panel included a wonderfully charismatic group: Dr. David Barber from the University of Manitoba and Canadian Research Chair in Arctic System Science, Dr. John Iacozza from the University of Manitoba and Centre for Earth Observation Science, and Dr. Graham Young, Curator of Geology and Paleontology at The Manitoba Museum. Mike Jensen moderated both evenings and Angela Sperling provided graphic facilitation.

LET’S TALK ENERGY WEEK

In partnership with the Canada Science and Technology Museums Corporation, The Manitoba Museum participated in Let’s Talk Energy Week, Canada’s first national energy awareness week from February 21–28, 2014. Dedicated to getting Canadians exploring and discussing the vital role energy plays in all aspects of our lives, Museum staff engaged the public at Polo Park Mall in Winnipeg with fun energy-related activities and handouts. Museum visitors also experimented with alternative energy activities at the Green Science workshop, displayed in the Science Gallery’s Boeing Explore Science Zone.

BOEING EXPLORE SCIENCE ZONE

The Boeing Explore Science Zone in the Science Gallery is dedicated to providing an interactive and ever-changing environment for Museum visitors to learn about different science topics and ideas. This year, in addition to hosting dozens of school groups for curriculum-based science demonstrations, the ESZ hosted three different public workshops. *Ice Ice*



Icy Europa, a moon of Saturn, has an underground ocean of liquid water



The past and future history of lunar exploration, in *Back to the Moon... for Good*

Baby opened in the heat of the summer months and gave visitors a chance to cool off with experiments about ice, its properties and how it impacts Earth’s environment. *Green Science* showcased sustainable and innovative energy, water and waste concepts, such as a bacteria battery, solar powered toys and making hydrogen gas. And to celebrate the JUNO awards held in Winnipeg in March, *Dancin’ Tones and Buzzin’ Bones* rocked visitors with activities demonstrating how vibrations and waves influence music and instruments.

CSA ASTRONAUT VISIT

Jeremy Hansen, Canadian Astronaut-in-training, visited The Manitoba Museum on February 28, 2014. Hansen gave an inspiring presentation about having goals and working towards them to a packed auditorium of students from Fort Rouge School, École Sacré-Coeur, École Robert H. Smith School, Nelson McIntyre Collegiate and Victoria Albert School.

PLANETARIUM SHOWS

Several new full-dome digital planetarium programs were introduced in 2013. New to the dome was *Dark*, a

show about the hunt for dark matter; *Ice Worlds*, which explored the many worlds in our solar system with frozen water; *Back to the Moon*, a show which follows the past and current history of humanity's journeys to our nearest neighbor and *Stars of the Pharaohs*, which explored the sky lore of ancient Egypt.

Making repeat appearances due to popular demand were *One World, One Sky: Big Bird's Adventure*, which took visitors on a tour of the skies above Sesame Street; *Wonders of the Universe* and *New Horizons*, which each explore the latest information and images of the universe and *Zula Patrol: Down to Earth*, a family show which explores the history of our own planet.

FESTIVAL DU VOYAGEUR PARTNERSHIP

Jocelyne Lavack, Museum Program Animator, was sent to the Trading Post in Fort Gibraltar for school programs during the week of the Festival. Part of the Woman in Fur Trade area, Jocelyne interpreted for a total of 717 students and adults. Monique Olivier, from Fort Gibraltar, helped bring the HBC Gallery alive by entertaining hundreds of visitor with Fur Trade stories and touchable artefacts in both French and English during Spring Break.

NORTHERN OUTREACH EDUKIT PROJECT

The Museum completed the second phase of a collaborative outreach effort with the Opaskwayak Cree



The Planetarium Theatre hosts the public along with school groups during the day and amateur star gazers in evening astronomy courses

Nation Educational Authority, Kelsey School Division, Flin Flon School Division, Frontier School Division, School Division of Mystery Lake and University College of the North.

Bridging Generations is designed around the concept of using objects to tell stories. Each of the five partnering communities received a set of edukits that are rich in artefact replicas and educational resource materials for both students and educators, all of which focus on relevant Cree histories, heritages and cultures. Project partner direction, guidance and support saw this phase examine northern Manitoban Cree societies' relationships with water, as a source of sustenance; physically, spiritually and socioeconomically, past and present.



Rentals are often held in Alloway Hall, with a capacity for 350 for dinner

Made possible through a Federal Museums Assistance Program (MAP) grant promoting Aboriginal Heritage, the project concluded in the spring of 2014.

ASTRONOMY COURSES

Taking advantage of the Planetarium's new Digistar 5 technology upgrade, our adult leisure course, *Eyes to the Skies*, helped over 60 participants learn about the heavens. Budding night sky enthusiasts took part in one of four seasonal courses offered this year. Covering constellations, planets, the deep sky and so much more, a lot was packed into each six-evening course. By the end, participants could navigate the night sky with ease and point out planets and other celestial objects.

RENTALS

The Museum is a fantastic place to hold an event, and the Facility Rentals Department hosted 137 of them over the past year. The Museum Galleries, Festival Hall and Alloway Hall were host to 62 events, bringing in over 16,000 guests. The majority were corporate functions, conference events, receptions, bar mitzvahs, weddings and corporate holiday parties. The birthday party program hosted 75 birthday parties, bringing over 1,016 excited party children to our facility. Some of the high profile events hosted at The Manitoba Museum included Institute for Canadian Citizenship, Online Business Systems, St. Vital Centre and Kroft Family Bar Mitzvah.



Northern partners and Museum staff together in The Pas, as *Bridging Generations* Project concluded with a training session

Collections

Ornithology collection,
housed in the Natural History
Collections Storage Vault,
4th floor tower

Human History curators and staff are committed to increasing awareness and appreciation of Manitoba's heritage through the acquisition and preservation of artefacts. This collection of over 2,670,000 artefacts is used for research, gallery and exhibit development, public programming and as educational teaching aids.

Collections in the Department of Natural History, numbering more than 231,000 specimens, are developed and maintained as a "specimen library" of plants, animals, fossils, rocks and minerals on behalf of the province. Specimens are used for reference and research, in public and school programs, and in exhibitions.

The collections are preserved in environmentally-controlled conditions, according to their material needs. As the provincial repository, a large portion of the Museum's collection is Manitoba material, but there are also many significant specimens from other parts of the world.

ACQUISITION HIGHLIGHTS

Archaeology

- 651 artefacts recovered from Sipiwesk House, a Hudson's Bay Company post established by David Thompson in 1792. A wide range of artefacts is included in the collection, including buttons, clay pipes, gun flints, strike-a-lights and beads.
- Over 4,500 artefacts from Sipiwesk Lake, Manitoba. Highlights include an unusual pestle, large pottery concentrations and many tools made from non-local materials. Each field season results in new discoveries that help us to understand the history of this part of northern Manitoba.

Botany

- 116 vascular plants, fungi, lichens and moss from the Nature Conservancy of Canada's new Fort Ellice preserve, Birds Hill Provincial Park. These specimens, some of which are rare or under-represented in the collection, were obtained during the Curator of Botany's summer field work.
- 17 preserved fungi, lichens and moss from the Mars Hill Wildlife Management Area, east of Libau, collected by Peggy Kasuba. No botanical specimens from this area were previously represented in the collection.

Ethnology

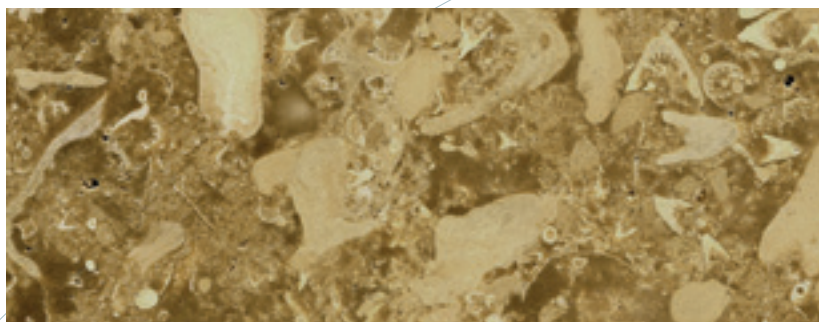
- Mann medal, commemorating the 1871 signing of Treaty No. 1 and Canadian visit of the Duke of York, later King George VI, in 1901. The medal was given to Chief William Mann, Jr., son of Chief Pennefather [Chief Kakekapehais, also known as



Beaded, moose hide gloves, made by
Rosie Berens Bittern

William Mann], who signed the Treaty on behalf of the Fort Alexander Band.

- Beaded gloves, by Rosie Berens Bittern, daughter of William and Rosie Berens. This set of beautifully crafted, smoke-tanned, moose hide gloves exemplifies the work of a second-generation beadwork artist, adding to the Museum's Berens Family collection.
- 23 birchbark bitings, made by Cree artist Angeliqwe Merasty (1927–1995), embodying both a fragile Indigenous women's art form and relations between artists and their non-



A polished slab of limestone from Inwood, Manitoba, contains abundant small corals and microbial mats. This specimen, of Silurian age (about 440 million years old), was collected during 2013 fieldwork (scale is in millimetres)

Aboriginal customers. These works expand the Museum's holdings in this distinctive genre by Mrs. Merasty, her mother Susan Ballentyne, and other important artists.

Geology/Paleontology

- Fossils were collected from Inwood, Manitoba. These unusual fossil samples are of Silurian age, including a variety of beautiful stromatolites (preserved structures produced by the activity of Cyanobacteria).
- Several dozen slabs of fossil-rich Ordovician limestone from the William Lake site, Grand Rapids Uplands. These contain numerous unusual fossils such as horseshoe crabs and jellyfish.
- A collection of 12 beautiful exhibit-quality minerals was donated, including specimens that had been parts of significant historic collections.

HBC Museum Collection

- A scrimshawed horn, with "M. McKay" inscribed on the underside, depicts scenes from York Factory, a prominent HBC trading post and distribution centre at the mouth of the Hayes River. The horn

likely belonged to Malcolm McKay, who joined the HBC from Scotland in 1841 and may have overwintered at York Factory before heading to his post at Fort Vancouver, on the Columbia River.

- Ungava Peninsula collection, consisting of eight artefacts, including a full-sized harpoon complete with ivory foreshaft and head with iron endblade, collected by an HBC employee who worked in the region at posts like Fort Chimo during the 1920s and 1930s.
- A set of stained glass windows from the photo studio in the downtown Winnipeg Hudson's Bay Company department store, dating to the 1930s.

History

- 42 items from the C. Kelekis Restaurant, including kitchen items and family portraits, help tell the story of this Winnipeg landmark family business, which closed in 2013.
- "Grotesque" from the exterior of the former Winnipeg Tribune building, designed by John D. Atchison, 1913.
- A Royal Alexandra Hotel porter's uniform that belonged to Joe Maruca in the 1950s. The uniform is enhanced

by photographs of Joe with American jazz performers, and his "secret" notebook of cartoons humorously detailing the life of porters.

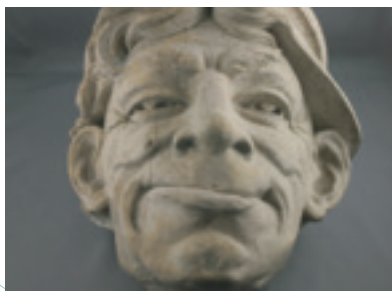
- Edison "Kinetoscope" movie projector, 1913, used by Edward Smith until the 1930s to show films in Brandon movie theatres and in rural areas.
- Irish quilt coverlet, 1880s, part of the trousseau of Bethia Burwash before she moved to Manitoba in the 1890s.
- Boar tusk ink stand, 1899, was a retirement gift for Major Herbert Swinford, who served in the Red River Expeditionary Force as an HBC Volunteer against the Fenian Raid of 1871 and as a transport officer in the North-West Field Force during the 1885 Rebellion.

Zoology

- A unique mount of a passenger pigeon (*Ectopistes migratorius*), an extinct species once common in Manitoba, is a female with its tail spread. This display was created by a Winnipeg taxidermist, suggesting that the specimen had been collected locally. Passenger pigeons are thought to have once been the commonest bird in the world; population estimates are three to five billion before they were exterminated by hunting and habitat loss.
- Superb Manitoba insect collections were donated that add several species not previously represented in the collection. Of particular interest are rare beetles, including *Scaphinotus elevatus*, a nocturnal species that has jaws adapted for feeding on snails, hence the common name of snail-eating beetle.



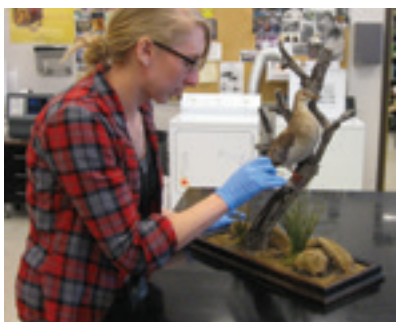
Detail of scrimshaw horn, depicting scene from York Factory, Manitoba



Grotesque, from exterior of former Winnipeg Tribune building, Winnipeg, Manitoba



Birchbark biting, made by Cree artist Angelique Merasty



Conservator Carolyn Sirett repairing mount for Passenger Pigeon specimen



Collections Specialist Janis Klapceki replacing Great Horned Owl specimen in *Habitat* display, Grasslands Gallery

- Several unprepared specimens of mammals, including wolves, beavers and various weasel species, will provide valuable complete skeletal material, important not only for zoology research, but also useful to paleontology and archaeology as comparative material.
- A window-killed solitary sandpiper (*Tringa solitaria*) was the first specimen of that species from Manitoba to be added to the collection. This is a not uncommon, but local and inconspicuous breeder in small wetlands throughout the boreal forest. It is unusual among sandpipers in that it nests in trees, using old nests of robins or similarly-sized birds.

COLLECTIONS DOCUMENTATION

In 2013–2014, a total of 6,636 new artefacts and specimens were added to the collection, broken down as follows: Archaeology (5,278), Ethnology (43), HBC Collection (20), History (174), Botany (76), Geology (48), Herpetology (1), Invertebrates (511), Ornithology (13), Paleontology (472). At fiscal year-end, the Museum's catalogues contained a total of 538,373 records, representing 2,902,087 objects.

This year saw additional upgrades to the Museum's collections database, refinement and testing of procedures for linking images within databases, and changes to the sorting codes used when new material enters the Collection:

- Additional income tax and valuation fields were added to Natural History catalogue modules in order to record appraisal values and changes thereto.

- Image/Digital Image Procedures drafted, technical issues worked through, and User's Manual for Photographic Services module drafted.
- New sorting codes were implemented for incoming objects, reflected in modifications in STAR/Museums pre-acquisition module.
- Work has started to review collections data on significant objects, as identified by the Museum's curators. Upgrades are being undertaken to improve catalogue entries and photographic documentation, and to update insurance values and condition reports.
- Revised collection forms, including Assignment of Copyright and Collections Access Agreement.

LOANS

The Manitoba Museum had 193 active loan agreements in place, representing 814 objects available on- and off-site for display or research purposes. The Museum also circulated 141 artefacts as part of the Outgoing Travelling Exhibition program, bringing the total to 955 objects in temporary circulation.

Incoming Loan Highlights:

- *William Berens, Chief of the Saulteaux*, by Marion Nelson Hooker; oil on canvas; Winnipeg Art Gallery
- *Portrait of Jacob Berens*, by Marion Nelson Hooker; oil on canvas; Provincial Archives of Manitoba

The two paintings were part of the temporary exhibit featuring the acquisition of the Berens Family collection of Chiefs' coats and commemorative medals.

Outgoing Loan Highlights:

- Several Northern Cree artefacts, including hoods and a birchbark container, to the Aanischaaukamikw Cree Cultural Institute (ACCI) in northern Québec, for their inaugural gallery exhibit. The loan enabled treatment to be undertaken on some of the objects by the ACCI's conservator.
- Catlinite tablet, incised with a Thunderbird, to the National Gallery of Canada, Ottawa, for their exhibition, *Art of this Land*.

CONSERVATION

The Museum's Department of Collections and Conservation provides preventive and restorative treatments for objects in the Collection. Conservators also monitor environmental conditions, such as temperature, relative humidity, light levels and signs of biological activity within exhibition and storage spaces. They implement an integrated pest management program to ensure that all objects are maintained according to the highest professional standards. Over the past year, 21 objects were treated in the lab.

Significant conservation activities in 2013–2014 included:

- Installation of cabling between the Nonsuch Gallery HVAC system and Conservation Laboratory, improving access to and monitoring of environmental data and the generation of reports.
- Entry of treatment information from *Nonsuch* work logs (chronicling 35+ years of activity) into STAR/Museums collections database – Conservation module.
- Stabilized, infilled and inpainted historic mount for taxidermied passenger pigeon specimen.
- Safe Work Procedure and Emergency Rescue Procedure, written and approved, to enable conservators to climb into *Nonsuch* rigging for monitoring of condition and cleaning.
- Completion of 504 condition reports and 112 mounts, storage boxes or enclosures.

PUBLICATIONS

The Manitoba Museum communicates its core functions of research, collections, exhibits and programs in a variety of published media, ranging from general topics to specialized historical and scientific inquiry. In addition to an impressive list of peer-reviewed publications, Museum staff contribute articles in "The Vault" section of the Museum's newsletter, as well as personalized blogs on the Museum's website.

This year alone, 53 blogs were posted by a dozen staff: from celebrating Indigenous heritage in the recently opened *Ashkibokahn* mini-diorama, to the discovery of a missing Winnipeg Tribune Press gargoyles head, to a botanist "Blitzing the Day Away" at Fort Ellice, near St. Lazare. All Museum publications, past and current, are available in the Museum's Reference Library.

ARCHAEOLOGY

K. Brownlee, "Ask an Expert: Kevin Brownlee Curator of Archaeology," *Pearson Science*, 7 (Toronto, ON: Manitoba Edition, 2013), p. 63.

T. Dedi, W. Hart-Ross and E.L. Syms, *Inninee (Cree) Material Culture and Heritage at Sipiweesk Lake: Results of the 2003 Archaeological Survey*, (Winnipeg, MB: The Manitoba Museum, 2013), 142 pp.

Wm. Dumas and L. Paul, *Pisim Finds her Miskanow* (Winnipeg, Manitoba: Highwater Press, 2013), 48 pp.

BOTANY

D.B. Robson, "Mutualistic and antagonistic networks involving the rare silky prairie-clover (*Dalea villosa* var. *villosa*), and its co-flowering plants and insect visitors," *Botany*, Vol. 92 (2014), pp. 47–58.

COLLECTIONS AND CONSERVATION

K. Nanowin, "The Manitoba Museum," Across the Country, *Canadian Association for Conservation of Cultural Property Bulletin*, Vol. 38 (3), December 2013, p. 15.

ETHNOLOGY

V. McKinley and M. Matthews, "No Small Things," *Selected Papers of the Rupert's Land Colloquium 2012* (Winnipeg: Centre for Rupert's Land Studies, 2012).

GEOLOGY/PALEONTOLOGY

S.D. Robson and G.A. Young, "Late Ordovician conulariids from Manitoba,

Canada", *Journal of Paleontology*, 87 (2013), pp. 775–785.

R.J. Elias, G.A. Young, D.-J. Lee, and B.-Y. Bae, "Coral biogeography in the Late Ordovician (Cincinnatian) of Laurentia", Geological Society, London, *Memoirs*, 38 (2013), pp. 97–115.

J. Young, G.A. Young, and W.C. Brisbin, *Geology of the Manitoba Legislative Building*, (Geological Association of Canada–Mineralogical Association of Canada Joint Annual Meeting, *Field Trip Guidebook FT-B1*; Manitoba Innovation, Energy and Mines, Manitoba Geological Survey, Open File Report OF2013-5, 2013), 27 pp.

R.J. Elias, G.A. Young, L.S. Stewart, M.W. Demski, M.J. Porter, T.D. Lukie, G.S. Nowlan, and E.P. Dobrzanski, *Ordovician-Silurian boundary interval in the Williston Basin outcrop belt of Manitoba: a record of global and regional environmental and biotic change*, (Geological Association of Canada–Mineralogical Association of Canada Joint Annual Meeting, *Field Trip Guidebook FT-C5*; Manitoba Innovation, Energy and Mines, Manitoba Geological Survey, Open File Report OF2013-1, 2013), 49 pp.

G.A. Young, D.M. Rudkin, E.P. Dobrzanski, M.B. Cuggy, S.P. Robson, M.W. Demski, D.P. Thompson, and L.A. Stewart, "Life Tracks Environment: Progression of facies and biotas at the Ordovician William Lake Lagerstätte, Manitoba", *4th Manitoba Paleontology Symposium, Canadian Fossil Discovery Centre, Morden, MB, Sept. 21–22, 2013*.

M.B. Cuggy, D.M. Rudkin, and G.A. Young, "The life and times of a new Ordovician eurypterid from the William Lake Lagerstätte, Manitoba", *Canadian Paleontology Conference 2013, Edmonton, Abstract Volume*, p. 28–29.

G.A. Young, D.M. Rudkin, E.P. Dobrzanski, M.B. Cuggy, S.P. Robson, M.W. Demski, D.P. Thompson, and L.A. Stewart, "The edge of a Warm Sea: harmonious progression of facies and biotas at the Ordovician William Lake Lagerstätte, Manitoba", *Geological Association of Canada – Mineralogical Association of Canada Winnipeg 2013, Abstracts*.

M.W. Demski, L.A. Stewart, R.J. Elias, G.A. Young, G.S. Nowlan, and E.P. Dobrzanski, "Mass extinction in Manitoba: Biotic change and stratigraphy associated with the Ordovician-Silurian boundary

interval", *Geological Association of Canada – Mineralogical Association of Canada Winnipeg 2013, Abstracts*.

G.S. Nowlan, R.J. Elias, G.A. Young, M.W. Demski, L.A. Stewart, B.J. Wheadon, and E.P. Dobrzanski, "The Late Ordovician conodont extinction event in the context of carbon isotopic data and interpretation of the Ordovician – Silurian boundary in the Hudson Bay and Williston basins", *Geological Association of Canada – Mineralogical Association of Canada Winnipeg 2013, Abstracts*.

HBC MUSEUM COLLECTION

A. Fay, "Finding Mikak: the search for a late 18th century Inuit trader in the archaeological record," *Exploring Atlantic Transitions: Archaeologies of Permanence and Transience in New Found Lands*, Society for Post-Medieval Archaeology, Monograph No. 7 (Boydell and Brewer, 2013), pp. 341–351.

HISTORY

R. Sawatzky, "Mennonite Heritage in Poland: A Visit to the Chelmino (Culm) Region", *Preservings* 33 (2013), pp. 37–41.

ZOOLOGY

J.E. Randall, S.V. Bogorodsky, T.J. Alpermann, U. Satapoomin, R.D. Mooi, and A.O. Mal, "*Pempheris flavicycla*, a new pempherid fish from the Indian Ocean, previously identified as *P. vanicolensis* Cuvier," *Journal of the Ocean Science Foundation*, 9 (2013), pp. 1–23.

N.R. Delventhal and R.D. Mooi, "*Callogobius liolepis* Bleeker, a senior synonym of *Gobiopsis aporia* Lachner and McKinney (Teleostei: Gobiidae: *Gobiopsis*)", *Zootaxa*, 3764 (2014), pp. 571–580.

N.R. Delventhal and R.D. Mooi, "Redescription of *Callogobius clarki* (Goren) (Teleostei: Gobiidae), Not a Synonym of *C. bifasciatus* (Smith)," *Copeia* 1 (2014), pp. 143–148.



Illustration by artist Leonard Paul from children's book, *Pisim Finds Her Miskanow* (2013), written by William Dumas; a collaborative project involving among others the Museum's Curator of Archaeology Kevin Brownlee.

Research

Volunteer Ed Dobrzanski
examining a bedrock surface
near Sylvan in the Manitoba
Interlake

Curatorial staff at The Manitoba Museum undertakes primary research on a variety of subjects relating to the province of Manitoba. This research, which is predominantly collections-focused, is collaborative in nature and takes place not only year round within the Museum's walls but during the summer in field work, as well as at other institutions throughout Canada and abroad. The Museum's subject experts interact and exchange information regularly with colleagues, community experts, and private individuals, who contact the Museum seeking information on a wide range of specific topics.

The Division of Research, Collections and Exhibits is pleased to welcome Winnipeg native Amelia Fay, the incumbent Curator of the Hudson's Bay Company Museum Collection, who assumed her full-time role in September 2013. As an archaeologist specialized in Inuit-European contact along the Labrador coast and doctoral candidate at Memorial University, Amelia's interests include the interactions between Europeans (including HBC employees) and Aboriginal peoples as they negotiated space, material culture, and their daily activities.

ARCHAEOLOGY

Birthing Stories (Nagami Bay Woman) – *Pisim Finds Her Miskanow*

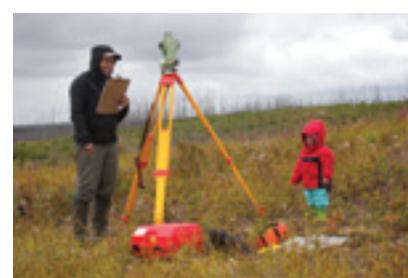
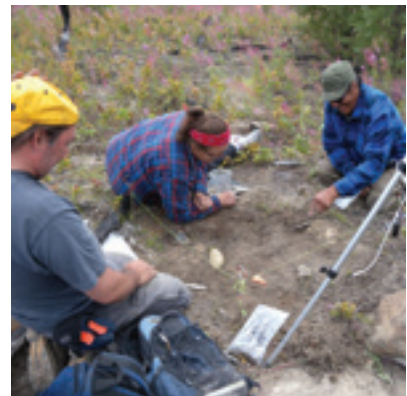
This research project supported the writing of the historical fiction children's book, *Pisim Finds Her Miskanow*. This book chronicles the life of a 13-year-old Rocky Cree girl (proto-contact period: 1600 – 1680 CE).

It serves as a companion piece to an earlier Museum publication by Kevin Brownlee and Dr. E. Leigh Syms, *Kayasochi Kikawenow Our Mother from Long Ago: An Early Cree Woman and Her Personal Belongings from Nagami Bay, Southern Indian Lake* (1999). The Manitoba Museum contributed expertise on the project, ensuring that the text and illustrations are historically accurate and based on local archaeological materials.

Granville Lake Archaeological Project – Additional Outcomes

While the archaeological component of this project ended in 2012, three post-graduate students, actively involved in this project from the Department of Anthropology, University of Manitoba, have now completed their PhD dissertations:

Lithic Analysis – R. Beardsel, *Mass and Attribute Analyses of the Quartz Lithic Assemblage from the Grandfather Quarry (HbMd-4), near Granville Lake, Northern Manitoba*. Unpublished



Upper: Archaeologist Kevin Brownlee and team excavate pot sherds from Gauer River site

Lower: Archaeologist Myra Sitchon and daughter Meghan Brownlee survey an ancient camp on Gauer River



Siipiweesk ceramic pot sherds (circa 1200 – 1500 CE) being assembled in laboratory

PhD Thesis, University of Manitoba: Winnipeg, MB (2013).

Geological Sourcing – R.E. ten Bruggencate, *A combined visual-geochemical approach to establishing provenance for pegmatite quartz artifacts and application within the Churchill River basin of Manitoba and Saskatchewan*. Unpublished PhD Thesis, University of Manitoba: Winnipeg, MB (2013).

Oral History – M.L. Sitchon, *Renewing relationships at the centre: generating a postcolonial understanding of Asiniskow Ithiniwak (Rocky Cree) heritage*. Unpublished PhD Thesis, University of Manitoba: Winnipeg, MB (2013).

Eagle Rapids Archaeological Site

The curator conducted fieldwork in remote northern Manitoba on the Gauer River. The goal of the project was to record a large archaeological site brought to the attention of the curator by interested community members. It proved to be one of the largest archaeological sites recorded in northern Manitoba, extending 1,000 metres by 750 metres. Based on the pottery scattered across the site, the main occupation of the site was between 1100 and 1600 CE.

BOTANY

Pollination Ecology of Hairy Prairie-Clover (*Dalea villosa*)

This research involved documenting the insect pollinators of a nationally and provincially rare plant that grows

in active to stabilizing sand dunes. The final data analysis and publication of this research was completed this year.

Fort Ellice Bioblitz

The curator participated in a two-day 'bioblitz' to identify the plants and animals present at the Nature Conservancy of Canada's newly acquired property, near St. Lazare, MB.

Bugseed Survey in the Mars Sand Hills

Two new populations of the rare American Bugseed (*Corispermum americanum*) were discovered in the Mars Sand Hills.

ETHNOLOGY

Mapping the Contours of Identity

In collaboration with historians, Dr. Carolyn Podruchny of York University and Dr. Nicole St-Onge of the University of Ottawa, Ethnology staff continues to link material culture evidence to historical investigation of the identities of the members of the Métis buffalo brigades. This year, staff photographed more than 20 beaded saddles of the type that would have been used by the brigades.

Marsh Collection

In collaboration with Dr. Jill Oakes of the University of Manitoba, student Sarah Freeborn and volunteer Tim Worth, the Ethnology section has strengthened links between archival records and the Museum's Marsh Collection and undertaken a complete

inventory. Garments in need of repair and conservation have been assessed in consultation with the Department of Collections and Conservation.

GRASAC Digitization Project

This project has involved: (a) the 'pilot' digitization of a significant collection of 16 First Nations beaded artefacts to increase internal online access to the collection, in cooperation with the Department of Collections and Conservation and; (b) the preparation and upload of collection records and images to the online database of the Great Lakes Research Alliance for the Study of Aboriginal Arts and Cultures (GRASAC), hosted by Carleton University, in cooperation with Dr. Cory Willmott, Department of Anthropology, Southern Illinois University (Edwardsville, IL) and graduate student Richard Laurin, Master of Museum Studies program, University of Toronto (Toronto, ON).

GEOLOGY/PALEONTOLOGY

Geological Developments in the Northern Interlake Region

In collaboration with Dr. Robert Elias (University of Manitoba) and others, the curator assembled and co-led a research field trip in which geologists were taken to visit significant geological sites in the Interlake Region. This took place in May 2013, as part of the Geological Association of Canada – Mineralogical Association of Canada Winnipeg meeting. In September 2013, the curator's research team carried out supplementary fieldwork at the William Lake site in the Grand Rapids Uplands. This is one of the world's most important fossil



Smooth Blue Beardtongue at Fort Ellice



Bumblebee pollinating Dotted Blazingstar

sites for the Late Ordovician Period (about 445 million years ago); the field party included David Rudkin (Royal Ontario Museum) and Michael Cuggy (University of Saskatchewan). The curator also carried out field collecting at other sites in the Interlake in collaboration with Ed Dobrzanski (The Manitoba Museum) and others, most notably at Sylvan and Inwood.

The Fossil Record of Jellyfish (Cnidarian Medusae)

Abundant fossil jellyfish in the Grand Rapids Uplands are the focus of ongoing studies, as the curator works to understand how they fit into the sparse global fossil record for this group. In 2013, the curator carried out collaborative work with Dr. J.W. Hagadorn (Denver Museum of Nature and Science). Visits to fossil collections at several museums in Germany allowed us to examine specimens from critical European sites; this will permit completion of a comprehensive review of global occurrences.

HISTORY

The Winnipeg Gallery: Exhibit Renewal Proposal for the Urban Gallery

Room-by-room analyses and recommendations for Urban Gallery renewal include the transformation of spaces into actual historical businesses/ buildings in 1920 Winnipeg, an introductory video-gallery room, and a post-1920 exhibit room.



The first Barred Owl record in the Northern Interlake, sighted by Curator of Zoology Dr. Randall Mooi, Regional Coordinator of Zone 9 for the Manitoba Breeding Bird Atlas project

Towards a Revitalized Grasslands Gallery, Part II

Recommendations were produced for improved exhibits and interpretation regarding late 19th century developments in the province, including rail, mass immigration and agriculture.

John D. Atchison, Winnipeg Architect

Archival research was carried out on this influential architect who transformed Winnipeg's skyline between 1905 and 1923.

ZOOLOGY

Systematics and Biogeography of Percomorph Fishes

Collaborative research with Naomi Delventhal (supervised PhD candidate, University of Manitoba) examines a genus of gobioid fishes, an ecologically important suborder of fishes. Results

thus far have described species new to science, clarified group membership and established basic relationships to help understand their evolution. Work with Dr. J.E. Randall of the Bishop Museum (Hawaii) and others has begun to establish species definitions for the bullseyes (Pemppheridae), a very challenging group.

Diversity and Historical Biogeography of Amphibians and Reptiles in Manitoba

Work on the hybridization of American and Canadian toads in northern Manitoba was advanced through co-supervision of an undergraduate project by Allison Kolynchuk with Dr. Margaret Docker (University of Manitoba). Ms. Kolynchuk provided a literature review and poster for a student symposium. This work and additional data collection will provide an initial assessment of the contact zone between the two species.

Manitoba Breeding Bird Atlas (Year 4)

With one field season remaining, this citizen science project has engaged 985 participants who have provided over 32,000 hours of observations. Highlights of atlassing in the Northern Interlake undertaken by the curator include finding breeding evidence for the short-eared owl and barred owl. Atlas data provides a baseline for assessing ecosystem health and environmental change. The project is administered by Bird Studies Canada with the support of several institutions including The Manitoba Museum.



Detail of American Bugseed (*Corispermum americanum*), studied by Curator of Botany Dr. Diana Bizecki Robson in its habitat at Mars Sand Hills, Brokenhead, MB

VOLUNTEER RESOURCES



Volunteer Ruth Dowse prepares plants for use in Museum dioramas

307

volunteers contributed a total of 17,243 hours in 2013–2014

52%

of our volunteers are youth between the ages of 14 and 29 with 35% of those youth being between 14 and 18.

65%

of our volunteers are female, 35% male.

The Museum is very fortunate to have many long service volunteers. Twenty-seven of our volunteers have been with us between 10 and 19 years; eight have been with us between 20 and 39 years and we have three volunteers who have been with the Museum for 40 years and over!

900 hrs

One volunteer contributed 900 hours, one contributed over 600 hours, another one contributed over 500 hours; 13 volunteers had between 200 and 600 hours and 24 more gave between 100–200 hours each.

Museum volunteers are instrumental to the success of Museum programs, research and activities. Throughout the year, volunteers assist with program delivery, retail sales, office assistance, collection management, rental events and even bingos to ensure grant funding for special projects. In all, our volunteers assisted in 24 departments in 2013–2014.

Volunteering at the Museum can be a stepping stone on the way to life-changing experiences. This year our volunteers used documentation about their volunteer contributions to support applications for university scholarships, Canadian citizenship, course credit in high school and university, and even their first apartments.

The Museum volunteer program continues to be a good training ground for gaining job-related experience, and for some volunteers it led to employment with the Museum. Over the past year, 10

of our volunteers found temporary or part-time employment in a variety of departments throughout the Museum. Once again, the Volunteer Resources Office partnered with several schools and educational facilities around the province and beyond to coordinate job shadowing and work experience placements at the Museum for over a dozen high school and university students. We welcomed new immigrants from Russia, France, China, Philippines, Mexico, Israel, England and Nairobi, who gained valuable work experience and learned about their new home!



Education volunteers Betty Turnock (seated left) and Susan Norris (seated middle) celebrated 40 years of service to the Museum in 2014. Photo taken in 1986



40 year volunteer award recipients Betty Turnock (front left) and Susan Norris (front right) with staff members of the Museum Programs department

Community Partners



United Way Winnipeg and Susan Lewis (here with husband Jim Lewis) were honoured at the Museum's 2013 Tribute

2013 TRIBUTE

Susan Lewis and United Way Winnipeg were honoured at The Manitoba Museum's ninth annual Tribute. President and chief executive officer of United Way Winnipeg since 1985, Ms. Lewis has taken the United Way from being strictly a funding agency, to one that actively works with other agencies to address significant social issues. Appointed to the Premier's Advisory Council on Education, Poverty and Citizenship since 2010, Ms. Lewis is also active on several committees for the United Way of Canada, and serves on the board of Imagine Canada, an umbrella organization defending the interests of charities across Canada. In 2011, Ms. Lewis received the Order of Manitoba for her dedication to making Winnipeg a better place.

Each year, the proceeds from Tribute are dedicated to a specific area of the Museum chosen by the honouree. Keeping with Ms. Lewis' commitment to building caring communities, the proceeds from this year's Tribute will

support The Manitoba Museum's Access for All community initiative. The Museum is committed to providing all Manitobans with an equal opportunity to access our programs regardless of social, economic or educational barriers. This is also a program that The Manitoba Museum has been pleased to partner with United Way Winnipeg and a number of United Way agencies for many years.

ALLOWAY WORLD EXHIBITS

Wrapped: The Mummy of Pesed was the third major exhibit of the Museum's ambitious travelling exhibits program – Alloway World Exhibits – or AWE, as we like to call it. A four-metre tall sarcophagus, created by local artists Kim Forrest and Anne Armit, with assistance from Sputnik Architecture, was placed on the Museum's Main Street plaza to welcome all visitors to *Wrapped*. The exhibit included a mummified cat, 60 authentic Egyptian artefacts, and the Pesed mummy, and marked the first time in 45 years that a real Egyptian mummy had been in Winnipeg.

With program support from The Winnipeg Foundation and the U.S. Consulate Winnipeg, the Museum had to open on Mondays during the winter to accommodate the demand for school programming. The AWE program, assisted by investment partners MacDon Industries, The Winnipeg Foundation and Power Corporation, supports The Manitoba Museum's ongoing commitment to bring the best of the world to Manitoba through an exciting roster of travelling exhibitions.

THE MANITOBA MUSEUM FOUNDATION

The Manitoba Museum Foundation provides annual funding to the Museum through the support of research, collections, acquisition and exhibit replacement grants. Their contributions allow the Museum to renew our galleries, support important scientific research, and assist with the continued collection of significant artefacts and specimens. The generosity of our many Foundation donors is both valuable and important to the Museum in our service to the community.

FINDING NEW WAYS TO GIVE

More donors and members than ever before are choosing to learn about and support the Museum through our development and membership web site. Visit www.mbmuseumfundraising.com.

Members are kept up to date on program and exhibit news through Features Online and donors can learn more about our web-only development programs like *Adopt an Artefact* and the *Nonsuch* Conservation Project.

The Museum is home to over 2.8 million artefacts and specimens, and donors have the opportunity to “adopt” select items from the collection to ensure their long-term preservation. The *Adopt an Artefact* program is a unique, fun and easy way for donors to show their support of Manitoba's local history, and support the conservation of many ancient treasures from Canada and around the world.

Conservation of the *Nonsuch*, the Museum's most iconic artefact, is a continuing task in order to preserve it for future generations. Originally built to support 10 sailors in bare feet, the *Nonsuch* has been trod on by over four million pairs of feet – in shoes – since permanently docking at the Museum over forty years ago. Visit our 3-D *Nonsuch* Conservation Project, where you can visualize the conservation “hot spots” and help us conserve this internationally revered artefact. www.mbmuseumfundraising.com.

November 2013, was a particularly exciting month at the Museum, with the introduction of two new fundraising initiatives. The first was a month-long celebration of a very special birthday – the 40th anniversary of the arrival of the *Nonsuch* at The Manitoba Museum site. The Love Thy *Nonsuch* campaign featured an entire month of special programming, presented by Gendis Inc., and included below-deck tours – something that had not been offered since 2007! Three unique “Love Thy *Nonsuch*” buttons were available, but only for the month. The Museum asked some local celebrities and *Nonsuch* aficionados to talk about why they loved the *Nonsuch* – watch the video here: <http://www.youtube.com/watch?v=81IGi1FKOPc>.



The original necklace that Hilary Druxman created for The Manitoba Museum

Love Thy *Nonsuch* will be an annual campaign, so remember to visit www.mbmuseumfundraising.com to find out what will be happening in November 2014.

Winnipeg Jeweller Hilary Druxman creates jewellery that is modern in design and approach. Ms. Druxman also acknowledges the importance of giving back to the community, and partners with local non-profit organizations to create one-of-a-kind jewellery. On November 28, 2013, Hilary Druxman Inc. unveiled the original necklace she designed for The Manitoba Museum. Celebrating Manitoba's long natural history, Ms. Druxman's design was inspired by Ammonoid fossils that are found in the Cretaceous rocks of Manitoba. You can purchase this unique piece of jewellery at Hilary Druxman's studio, or at The Manitoba Museum's gift shop.

SAY IT WITH A STAR

In its 21st year, *Say It With A Star* continues to be a popular initiative. Stars are “adopted” to honour life's most important moments – births,

deaths, birthdays, anniversaries – or, “just because.” Adoptive names are listed outside the Science Gallery, and it is not uncommon for participants to share emotional moments when they see their star. Through their generous support, “star-crossed” donors have facilitated technology improvements to the Planetarium. Thank you.

LAKE WINNIPEG – SHARED SOLUTIONS

The Manitoba Museum's ambitious \$1 million permanent exhibit, *Lake Winnipeg – Shared Solutions* opened on March 22, 2014, – World Water Day. Located in the Science Gallery, the exhibit features the “Watershed of the Future” simulator, which is the first integration of virtual reality/video simulation technology and pure water science in Canada. Lake Winnipeg is one of the 10 largest freshwater lakes in the world, and its basin spans four Canadian provinces and four American states.

Lake Winnipeg – Shared Solutions marks the Museum's entry into one of the most significant issues facing Manitoba and Canada today. Due to its shallow depth, the lake is especially vulnerable to climate change, and is under severe stress due to nutrient overloading from industry, agriculture and communities throughout its vast basin. The exhibit will educate and empower ALL Manitobans to affect positive change on their environment.

Lake Winnipeg – Shared Solutions would not have been possible without the generous support of our corporate and community partners.



The *Nonsuch* celebrated the 40th anniversary of its arrival at the Museum in November, 2013

The Manitoba Museum extends its deepest expression of gratitude to our lead partner The Province of Manitoba, Tourism, Culture, Heritage, Sport and Consumer Protection. On behalf of all Manitobans, please accept our heartfelt thank you for your continued support.

GOVERNMENT

City of Winnipeg

City of Winnipeg Museums Board
Tourism Winnipeg

Province of Manitoba

Manitoba Conservation and Water Stewardship
Manitoba Education – Bureau de l'éducation française
Manitoba Education and Literacy
Manitoba Heritage Grants Program
Manitoba Tourism, Culture, Heritage, Sport and Consumer Protection
Manitoba Historic Resources Branch
Travel Manitoba

Government of Canada

Canada-Manitoba Agreement on Minority Language Education and Second Official Language Instruction
Canadian Heritage-Museums Assistance Program
Government of Canada – Aboriginal Affairs and Northern Development
Human Resources and Skills Development Canada – Canada Summer Jobs (CSJ)
Natural Resources Canada – Science and Technology Internship Program
Young Canada Works/Jeunesse Canada au Travail (YCW) – Canadian Museums Association

CORPORATE PARTNERS

Aon Reed Stenhouse Inc.
Assiniboine Park Conservancy
Bulldog Music
Canada Science and Technology Museums Corporation
Cardinal Capital Management
CD Media
CNIB
Crosier Kilgour & Partners Ltd.
Diamond Concrete Cutting & Coring
École Taché
Edward Carriere Ltd.
Ellement & Ellement, Consulting Actuaries
Fort Garry Industries Ltd.
FWS Construction Ltd./Confidence Management Ltd.
Gatewest Coin Ltd.
Grandview School
Greatwest Maintenance Services
Gunn's Bakery
Hilary Druxman Design 43 Inc.
King Edward Preceptory
Miami School

Mid-West Packaging Limited
Relish New Brand Experience
River East Transcona School Division
St. John's Ravenscourt School
Stevenson Group Inc.
Terracon Development Ltd.
The Gail Asper Family Foundation Inc.
Transcona Historical Museum
Van Walleghe School
Victoria-Albert School
W.H. & S.E. Loewen Foundation

Capital Renewal Planning

The Winnipeg Foundation – Arts Stabilization Manitoba Funds

Development Database Training and Computer Upgrades

The Winnipeg Foundation – Arts Stabilization Manitoba Funds

Honourary Counsel

James A. Ripley and Robin M. Kersey, Thompson Dorfman Sweatman LLP

HBC Museum Collection

HBC History Foundation

Media Partners

Bell Media
CBS Outdoors
FANFARE Group
Grosney Productions
Pattison Outdoor Advertising
Rogers Digital Media
Shaw Media
Winnipeg Free Press
Winnipeg Parent Magazine

Members Night

Assiniboine Dental Clinic
Bulk Barn (Unicity)
Canada Safeway
Children's Dental World
Giant Tiger (Donald Street)
McDonald's Canada (Grant Avenue)
Old Dutch Foods, Ltd.
Real Canadian Superstore (Portage Avenue)
Reflections Dental Health Centre
Shoppers Drug Mart (Roblin Boulevard)
Sobeys (Unicity)

Professional Development Grants

Alliance of Natural History Museums of Canada
Canadian Museums Association
The History Education Network/Histoire et éducation en réseau

Programs Reservation Booking System Upgrade

Manitoba Community Services Council

Tribute 2013 Honouring Susan Lewis & United Way Winnipeg

SPONSORS

Dinner Sponsors

Great West Life Assurance Company
Investors Group
James Richardson & Sons, Limited
Jewish Foundation of Manitoba
Qualico Development
Richardson International
The Asper Foundation
The Gail Asper Family Foundation Inc.
Tundra Oil & Gas Partnership

Event Supporters

The Fairmont Winnipeg
Avenue Four Communications Group
Canada Safeway
Cargill
Manitoba Liquor & Lotteries
Manitoba Forestry Association
Relish New Brand Experience
Freeman Audio Visual Canada
Tribute Table Sponsors
Birchwood Automotive Group
Cardinal Capital Management
CN
Deloitte
Ellement & Ellement, Consulting Actuaries
James Richardson & Sons, Limited
Johnston Group Inc.
Manitoba Public Insurance
Megill-Stephenson Company Limited
National Leasing Group Inc.
The North West Company
Scotiabank
Wawanesa Mutual Insurance Company

DONORS

Robert J. Adkins
Richard Andison & Joanne Lee
Aon Reed Stenhouse Inc.
Assiniboine Park Conservancy
William and Liz Baines
Judith Bartlett
Morley and Marjorie Blankstein
Joan Blight
Bob Brennan
Business Council of Manitoba
Cambrian Credit Union Ltd.
Angus & Diane Campbell
Canad Inns

Century Properties Inc.
Elizabeth Chipilski
CNIB
Cindy Coker & Sherman Kreiner
Richard and Hennie Corrin
Sandra & Michael Cox
Shelia Cox
Barbara L. Crutchley
Cunningham Business Interiors
Terry Danelley
Kelly DeGroot
Joanne V. DiCosimo & Allan Johnson
Denise Erskine
Forks North Portage Partnership (FNPP)
Gendis Inc.
Heather Grant-Jury
Gregg J. Hanson
Patricia E. Harper
Gordon W. Holland
Charles and Marilyn Huband
International Institute for Sustainable Development
Kevin and Els Kavanagh
Claudette Leclerc & Robert Kennedy
Robert and Deirdre Kozminski
Richard and Hillaine Kroft
G. Herbert Lawler
Gus and Gail Leach
Janice Ledermen
Rick Lee
Lewis Communications
Graham and Suzanne Lount
Reginald W. Low
Magellan Aerospace
Manitoba Blue Cross
Manitoba Centennial Centre Corp.
Manitoba Federation of Labour
Manitoba Hydro
Elizabeth Marr
Honourable Mrs. Pearl McGonigal, O.M.
Barrie & Marvelle McPherson
Hubert Mesman
Mitchell Fabrics Ltd.
Roberta Pauls
Art and Allison Pearson
People First HR Services
Edward Ransby
Jennifer Ratray
RBC Financial Group
Tannis Richardson
Hartley T. Richardson, C.M.
James and Diane Ripley
Jim and Arlene Robinson
Leslie and Noralou Roos

Jan Sanderson
 Javier Schwesensky & Nora Sobel
 Harvey & Sandra Selter
 Shelter Canadian Holdings Ltd.
 Richard Stecenko
 Mary Beth Taylor
 The Children's Hospital
 Foundation of Manitoba
 The Office of The Lieutenant
 Governor
 The Winnipeg Foundation –
 Triple A. Fund
 Lorna M. and T. Kenneth
 Thorlakson
 United Way Winnipeg
 University of Manitoba –
 Donor Relations
 Paul Vogt
 Ayn Wilcox
 Winnipeg Building & Decorating Ltd.
 Winnipeg Chamber of Commerce
 Winnipeg Labour Council
 Ted & Jo Wright
Access For All
 Carolyn Sifton Foundation
 The City of Winnipeg
 Johnston Group Inc.
 Maxim Truck & Trailer
 Winnipeg Goldeyes Field of Dreams
 Foundation

COLLECTIONS, EXHIBIT & PROGRAM PARTNERS

A Conceptual Floor Plan For The 'Manitoba Peoples and Places Gallery'

The Manitoba Museum Foundation
Alloway World Exhibits (AWE)

MacDon Industries Ltd.
 Power Corporation of Canada
 The Winnipeg Foundation
Black Brant 5C Rocket

Honda Canada Foundation
 Magellan Aerospace

University of Manitoba –
 Faculty of Engineering
 Manitoba Aerospace

Bridging Generations

Canadian Heritage – Museum
 Assistance Program
 Flin Flon School Division
 Frontier School Division
 Kelsey School Division
 Mystery Lake School District
 Opaskwayak Cree Nation Council
 of Elders

Opaskwayak Cree Nation
 Education Authority
 University College of the North,
 Faculty of Education

Café Scientifique

Canadian Association
 of Science Centres
 International Polar Bear
 Conservation Centre at
 Assiniboine Park Zoo
 Manitoba Conservation
 and Stewardship

University of Manitoba
 W. Garfield Weston Foundation
Discovery Room
 TD Canada Trust
Education Programs
 Great-West Life Assurance
**Elk Diorama Pilot Technological
 Upgrade Project**
 Manitoba Heritage Grants Program
 The Manitoba Museum Foundation
Explore Science Zone

Boeing Canada Technology
**Fort Rouge: Commemorating
 275 Years of French Presence
 in Manitoba**

La Compagnie de La Vérendrye
**Grade Eleven In-Class
 Presentations Project Phase One**

Canadian Museums Association
 The History Education Network/
 Histoire et éducation en réseau
 Manitoba Education – Bureau de
 l'éducation française
 Manitoba Heritage Grants Program

**Lake Winnipeg: Shared
 Solutions – Exhibit Development**
 Canadian Wildlife Federation
 Foundation

The Chawkers Foundation
 Government of Canada – EcoAction
 International Institute for
 Sustainable Development (IISD)
 Lake Winnipeg Foundation
 Manitoba Education and Literacy
 Manitoba Hydro

Manitoba Pork Council
 RBC Blue Water Project

The Richardson Foundation
 Water Innovation Centre
Living In Space
 Canadian Space Agency

Manitoba Day
PRESENTING SPONSOR
 Manitoba Liquor & Lotteries

EVENT SUPPORTERS
 Corpell's Water
 Manitoba Pork Council
 Van Houtte Coffee Services

Mann Medal Special Acquisition
 The Manitoba Museum Foundation
**Museum Galleries Media
 Player Upgrade**

The Manitoba Museum Foundation
MuZZZeum Sleepover Program
 Investors Group

**Peatlands and Coal Exhibit
 Renewal Project**
 Natural Resources Canada –
 Science and Technology
 Internship Program

The Manitoba Museum Foundation
Pisim Finds Her Miskanow
 Frontier School Division
 Highwater Press
 Social Sciences and Humanities
 Research Council of Canada

University of Winnipeg
**Prairie Pollination
 Exhibit Videos**
 The Manitoba Museum Foundation

**Prairie Pollination Virtual
 Exhibit**

Canadian Museum of Nature
 Manitoba Conservation, Wildlife,
 and Ecosystem Protection Branch
 Manitoba Heritage Grants Program
 University of Manitoba

University of Saskatchewan
 University of Winnipeg

Virtual Museums of Canada –
 Virtual Exhibits Investment
 Program

Spring Break Programming

Festival du Voyageur
 Manitoba Public Insurance

**The Odyssey of Wawel's
 Treasures 1939–1961**

Consulate of the Republic
 of Poland in Winnipeg

Wrapped! The Mummy of Pesed

AMSC Research LLC
 Anne Armit
 Kim Forrest
 MacDon Industries Ltd.
 Power Corporation of Canada
 Sputnik Architecture
 The Winnipeg Foundation
 U.S. Consulate Winnipeg

RESEARCH PARTNERS

Augmenting Inuit Clothing Documentation

University of Manitoba
Blumenhof Excavations
 University of Winnipeg
 Mennonite Heritage Village

**Diorama 'Pilot' Technological
 Upgrade – Touchscreen Key &
 Notebook**

Manitoba Heritage Grants Program
 The Manitoba Museum Foundation

**Diversity and Historical
 Biogeography of Amphibians
 and Reptiles in Manitoba**

University of Manitoba
Fort Ellice Bioblitz

Nature Conservancy of Canada

Gauer River Research
 Nisichawayasihk Cree Nation
 Family and Community Wellness
 Centre, Nelson House, MB

O-Pipon-Na-Piwin Cree Nation,
 South Indian Lake, MB

University of Winnipeg
**Geological Developments in
 the Northern Interlake Region**

Manitoba Geological Survey
 Royal Ontario Museum
 University of Manitoba
 University of Saskatchewan

**GRASAC Digital Research
 Community Project**
 Carleton University

University of Toronto
 The Manitoba Museum Foundation
**Innnew (Cree) Material
 Culture and Heritage at
 Sipiwek Lake: Results
 of the 2003 Archaeological
 Survey – Publication**

Cross Lake First Nation

Manitoba Historic
 Resources Branch

Manitoba Hydro
Manitoba Breeding Bird Atlas

Bird Studies Canada
 Canadian Wildlife Service
 Manitoba Conservation
 Manitoba Hydro
 Nature Conservancy of Canada
 Nature Manitoba

Mapping the Contours of Identity

Social Sciences and Humanities
 Research Council of Canada
 University of Ottawa
 University of Manitoba
 York University

Nonsuch Conservation Project

HBC History Foundation
**Oral History Collection Winnipeg
 and Eastern Manitoba**
 The Manitoba Museum Foundation

**Otinawasowin: Birthing the
 Stories of Kayasochi Kikawenow
 (Nagami Bay Woman)**

Frontier School Division
 Highwater Press
 Manitoba Historic Resources Branch
 Social Sciences and Humanities
 Research Council of Canada
 University of Winnipeg

**Sipiwek Lake
 Archaeology Project**

Cross Lake First Nation
 Manitoba Historic Resources Branch
 Manitoba Hydro

**Systematics and Biogeography
 of Percomorph Fishes**

Bernice Pauahi Bishop Museum,
 Honolulu, Hawaii
 Biological Laboratory, Imperial
 Palace, Tokyo, Japan

Macleay Museum, University
 of Sydney, Sydney, Australia

University of Manitoba
**The Fossil Record of Jellyfish
 (Cnidarian Medusae)**

Denver Museum of Nature
 and Science, Denver, CO

Winnipeg River Burial Project

Government of Canada –
 Aboriginal Affairs and Northern
 Development

Canadian Heritage – Museums
 Assistance Program
 Manitoba Heritage Grants Program
 Manitoba Hydro
 The Manitoba Museum Foundation
 Sagkeeng First Nation

Elite Gold (\$25,000 +)

Bell Media
Great-West Life Assurance
Company
Investors Group
Manitoba Hydro
Shaw Media

Elite Silver (\$10,000 – \$24,999)

BMO Bank of Montreal
Boeing Canada Technology –
Winnipeg Division
CBS Outdoors
Gendis Inc.
Johnston Group Inc.
MacDon Industries Ltd.
Magellan Aerospace
Manitoba Liquor & Lotteries
Maple Leaf Construction Ltd.
TD Bank Group
The Fairmont
Wawanesa Mutual Insurance
Company

Elite Bronze (\$5,000 – \$9,999)

The Asper Foundation
Cardinal Capital Management
Terracon Development Ltd.
Sharon & Al Munro & Family
Megill-Stephenson Company
Limited
Qualico Development
Scriven Family
Lorna M. and T. Kenneth
Thorlakson
Winnipeg Free Press

Patron (\$2,500 – \$4,999)

Canada Safeway
Cargill
Carol Beitzel
Robin de Carteret
CN
Ellement & Ellement,
Consulting Actuaries
IBM Canada Ltd.
James Richardson & Sons, Limited
Kevin and Els Kavanagh
Manitoba Public Insurance
Maxim Truck & Trailer
National Leasing Group Inc.
Scotiabank
Tony Smith
The Pollard Family Foundation
Winnipeg Airports Authority Inc.
Winpak Ltd.

Benefactor (\$1,000 – \$2,499)

Aon Reed Stenhouse Inc.
Avenue Four
Communications Group
William and Liz Baines #
Bob Brennan and Doreen Gorda #
Robert Chipman
John Corp
Ken Drysdale
Freeman Audio Visual Canada

Bruno Gossen & Solange
Chabannes
Hilary Druxman Design 43 Inc.
Tim Kurbis
Todd Lawton
Claudette Leclerc &
Robert Kennedy ^

Lewis Communications
W.H. & S.E. Loewen Foundation
Manitoba Aerospace Association
Manitoba Pork Council
Penny and Charles McMillan #
Hubert Mesman #
William and Lindsay Parrish
RBC Foundation
RBC Wealth Management
Relish New Brand Experience
George & Tannis Richardson
Claudio Rigatto & Lisa Bryski
J. Derek Riley
Scott Sutherland & Lindsay DuVal
The Gail Asper Family
Foundation Inc.

University of Manitoba –
Faculty of Engineering

Sustainer (\$500 – \$999)

Archives of Manitoba
Mr. & Mrs. Astwood
Richard and Joyce Betts *
Rudel Burman
The Children's Hospital
Foundation of Manitoba
Jeoffrey R. Chipman #
Richard and Hennie Corrin
Sandra Cox
Scott Craig #
Crosier Kilgour & Partners Ltd
Cunningham Business Interiors
Delta Waterfowl Foundation
William and Margaret Fast
Forks North Portage
Partnership (FNPP)
FWS Construction Ltd./
Confidence Management Ltd
Gregg J. Hanson
Katarina Kupca
Gus and Gail Leach #
Elizabeth Marr
Jean-Pierre Parenty
Art and Allison Pearson #
People First HR Services
Lawrence and Frances Pollard
Royal Canadian Securities Limited
Judge Charles Rubin
Les Russell
Cindi Steffan ^
Barry Talbot
Travel Manitoba
United Way Winnipeg
Contributor (\$250.00 +)
H. Elise Allen
D.T. Anderson
Nancy and Blair Anderson ^ #

Richard Andison
Friend of the Museum
Richard and J. Elaine Archer
Judith Bartlett
Mike Bell
Bruce and Shelley
Bertrand-Meadows
Lee-Ann Blase *
Diane Boyle
Business Council of Manitoba
Angus Campbell
Canad Inns
Centre Venture Development
Corporation
Century Properties Inc.
Lawrie and Bea Cherniack #
Elizabeth Chipilski ^
John E. Christie
Drew Cringan
Barbara L. Crutchley #
Ashleigh Czynryj ^
Albert El Tassi
Harry and Elvira Finnigan
Colin and Kerry Flemington
Troy Hamilton
Cliff Harvey
Kerry and Kaaren Hawkins
Janet Hewitt
Denis and Tricia Hlynka
Charles and Marilyn Huband
Norman and Helen Humby
Martina Hutchison ^
Eric Johnson
Mary Kelekis, O.M.
Murray Kilfoyle
Greg Klassen ^
Cliff Kolson
Robert and Deirdre Kozminski
Richard and Hillaine Kroft
James Krovats
T. G. Kucera
Jeff Lamothe
Otto Lang & Deborah McCawley
Janice Ledermen
Daniel Levin & Lilian Bonin
Reginald W. Low
Friend of the Museum
Manitoba Centennial Centre Corp.
Manitoba Federation of Labour
The Estate of Alice Hope Maruca
Brian McArthur
Honourable
Mrs. Pearl McGonigal, O.M.
Barbara McLeod
Mid West Packaging Ltd.
Mitchell Fabrics Ltd.
Pattison Outdoor Advertising
Roberta Pauls ^
Eric Pele
Aaron Penner
Chris Pratt
Edward and Carolyn Ransby

Jennifer Rattray
RBC Financial Group
Red River College
Kenneth Rerie
Hartley T. Richardson, C.M.
Jim and Arlene Robinson ^
Estelle Rochon Fraser
Leslie and Noralou Roos
Joyce Costello Rose
Javier Schwersensky & Nora Sobel ^
Bill and Yvonne Searle *
Harvey Sector
Ken and Barb Shute
Robert K. Siddall
Dennis & Bradley Smith
Gary and Gwen Steiman
Stevenson Group Inc.
Emöke J. Szathmáry, C.M. #
Hugh and Susan Taylor
Thompson Dorfman Sweatman LLP
Ian Wallace
Winnipeg Building & Decorating Ltd.
Winnipeg Chamber of Commerce
Jo Wright
Supporter (\$5 – \$249)
Lisa Abram
Lana and Alero Adeleye-Olusae ^
Robert Adkins
Phil Aldrich
Annemarie Anderson
Friend of the Museum
Friend of the Museum
Friend of the Museum
Friend of the Museum
Fred Aoki
Assiniboine Park Conservancy
D. P. Barry
Leonard and Mary Bateman
Dianne J. Beaven
Jonathan Bence
Carol Bennett
Aaron Berg & Louise Sloane
Susan Bethune
Diane R. Biehl
Brenda Birks
Michele and Bruno Bisewski
Joan Blight
John and Deb Blower
Friend of the Museum
Eric and Clara Bohm
Ingrid Bolbecher
Helen M. Boulton-Elliott
Helen F. Bowen
Ernest Bridges
Ken and Rosemary Brisson
Hugh Brown
Merrill E. Brown
Anthony Browning
Kevin M. Brownlee ^ #
Carol R. Budnick
Bulldog Music

Robert and Lisa Butterworth
Helen Cameron
Mary C. Campbell
Canada Science and Technology
Museums Corporation
Scott Carman
Dora Carpenter
John Carruthers
CD Media
Tanja and Michael Champagne
Cary and Sarah Chapnick
Betty Charette
S. Joyce Chernichan
Larry Chesley
Alfred and Elizabeth Chorney
CNIB
Douglas and Mary Cobb
Cynthia and Stephen Cohlmeier
Francoise Collins *
Friend of the Museum
Kenneth and Carol Cox
Sheila Cox
Eugene Czynryj
Phyllis Dana *
Tanya Dash
Ronald and Mithra Davey
Ray G. Davis
Colin and Margaret Dawes
Gary Day *
Judith de Vries-Porteous
Kelly DeGroot
Cornelius Derksen
Remi Desbiens
Danielle Deveau
Julie Diakiw
Diamond Concrete
Cutting & Coring
Joanne V. DiCosimo
Mark and Elsie Dionisio
Edward P. Dobrzanski *
Geraldine Donnelly *
Sally R. Dowler
Patricia Drewett
Charlene Dueck
École Taché
Edward Carriere Ltd.
John M. A. Embil
BSc (Hon), MD FRCPC, FACP
Don and Martha Epstein # *
Denise Erskine
David and Jane Evans
Mary and Craig Fardoe
Stewart and Patricia Fay
James and Jeanne Fell
Jane and Howard Ferch
Robert and Margaret Ferguson
Ed Feuer
Henery L. Fineberg
Mary Flatt
Miriam Fliegel & Ron Steigerwald
Fort Garry Industries Ltd.
Ruby Fraser

Janele Frechette ^
Martin Freedman, Q.C.
C. Mark Friesen
Barbara Fuller & Kelvin Seifert
Lisa M. Gabel
Gatewest Coin Ltd
Elizabeth Genik
Joyce Gibson
Lee Gibson
Megan Gillespie & G. Ritchie
William and Catherine Gordon
Grandview School
Hendrika Granovsky
Marjorie and Robert Gravin
Greatwest Maintenance Services
Gunn's Bakery
Merv Gunter
Patricia Guy
Dave Hall and Barbara Remnant
James Hanley and Amy Richmond
Tony Harwood-Jones &
Heather Dixon
Dr. and Mrs. J. C. Haworth
Jane Hayakawa
Marc Hébert ^
Noreen Hees ^
Mireille Fiola Hein and Jeff Hein
Rainer and Adele Hempel ^
Jack R. Hignell
Michael and Shirley Hill
Gordon Holland
Richard and Karen Howell
International Institute for
Sustainable Development
Barry and Geraldine Irvine
Philip K. Isaac
Rudy and Gail Isaak
Leonard B. Jackson
June M. James
Susan Johanneson
Theresa Johanneson
Esther Johnson
Karen L. Johnson *
Bruce Johnston
David and Diane Johnston
Doris K. Jones
Ausma and Gunars Kaktins
Yatta Kanu
Philip and Evelyn Katz
Donald Keatch
Gordon C. Keatch
Phyllis M. Kilpatrick
King Edward Preceptory
Ian King
Janis and Dennis Klapcecki ^
Katherine Klassen
Gisele B. Klymchuk
Lila Knox ^
Bradley Krentz
Kelvin and Mary Krieger
Jordan Kroeker
Elisabeth and John Kunkel

Peter Lacey
Maurice Lakusta
Elizabeth M. Lavender
G. R. Leaver
Linda Lee & Larry Bremner
Kristie Lester
Dick and Rosy Lim
Susan Lingle
Katy Livingstone
Sandra Lobban
Friend of the Museum
Colleen and Richard Loewen
Lois Loganberg
W. Brock Love
Simon J. Lucy and
Leslie M. Malcolmson
Veda Lyons
Catherine Macdonald &
Gregory McCullough
Douglas W. MacEwan
Angus MacIver
Angelo and Pauline Macrodimitris
Chris Magnusson
Russell and Juliette Mammei
Eric Matheson
Ihor and Helen Mayba
J. Peter and Lynn McClure
David and Linda McDowell
David McInnes
James and Geraldine McKinley
Barb McMillan ^
Sandra McMillan & Brock McEwen
Margaret McNutt-Reichelt and
Raymond Reichelt
Barrie and Marvelle McPherson
Miami School
Ronald and Sandra Mielitz
Jocelyn A. Millard
James Miln
Grant Mitchell &
Catherine Lambeth
Lorelie Mitchell & Piet van Dijken
Mr. and Mrs. Nathan Mitchell
Pamela Moat ^
Anya Moodie-Foster ^
Randy Mooi & Odette Morin ^
Dallas Morgan
Vera Moroz
Margaret I. Morran
Charles and Marion Mossman
Kathy Nanowin ^
Ruth E. and J. Keith Neill
Emily M. Nett
Barbara Nielsen
Susan and Allan Norris *
Tom and Betty Nowicki
Fiona Odium
G. C. Oliver
Doris Orton
Cameron and Carole Osler
David Pancoe and
Kristin Heinrichs
Jean A. Paterson

Sven Pedersen & Rhonda Diamond
Gary Pell
Audrey Peniuk
Brigitta Perkins
Frieda Peters
Hanna Peters ^
Norm and Edna Pohl
Aimee Primolo ^
James R. Pugh
Eric and Erna Pullam
Laird Rankin
Juta and Austin Rathke
Iris Reimer
H. Sanford Riley, C.M.
James and Diane Ripley
River East Transcona
School Division
Diana B. Robson ^
Doreen Romanow *
Kate Ross
Beverly Ryman
Maureen and Lawrence Salter *
Jan Sanderson
Theodore and
Marianne Scheuneman
H. A. Schon
M. Schroeder & E. Schilder
Marie Schroeder
Katharine Schulz
Hartley C. Schwark
Arthur Seaman
Lisa Shields
Glenn Shott
Wade and Jennifer Sigfusson
Eric and Helen Sim
Fiona Sime ^
Dolores Skolny
Helen Smerchanski *
Joanne Smith
Mabel S. Smith
Joyce Smyth
Dianna Sotas
Peter Spencer
James and Sylvia Squire
St. John's Ravenscourt School
Lea Stirling and Mark Lawall
Violet Marie Storrie
Martin Stroud
Shirley and Tom Strutt
Lorne Sunley and Kathy Szeler
Muriel L. Sutherland
Nigel and Wilma Symonds
Mary Beth Taylor
Andrej and Ruby Tekauz
Corinne Tellier
Denis Thibault
Randy Thiessen and Diane Gitter
David Thompson ^
Marilyn J. Thompson
Doreen Thorlacius
Helen A. Toews
Winona J. Torch

Transcona Historical Museum
Lee Treilhard
Ray Turner
University of Manitoba –
Donor Relations

Bert and Sherry Valentin ^
Ken Van Ameyde & Lindy Lee
Van Wallegghem School
Robert and Frances Vannevel
Victoria-Albert School
Francisco and Estela Violago
Hilda Wagstaffe
George Wakeling
Dave Walchuk
Pat and Peter Walker
Cynthia and V. Stirling Walkes
Gordon J. Warkentine
Rosanne Wasyluniuk
George Waters
J. David and
A. Elizabeth W. Watson

John and Bernice Watts
Donna Webb
Ken and Barbara Webb
Glen A. Webster
John and Nelly Wierda
Wade Wiesner
Jeanne Witwicki
Sebrina Woligroski
Timothy W. Worth *
Louise Wright
Adele Yakimischak
Graham and Vicki Young ^
Scott Young ^
Tannis Young
Shel Zolkewich

In Memory or Honour of

In honour of Paul W. Hunter
Carol Beitzel

In memory of Cheryl Edelson
Doreen Romanow *

In memory of David Ross
Joanne V. DiCosimo

In memory of Dr. Fred Aoki
Hugh and Susan Taylor

In memory of Dr. William Preston
Joanne V. DiCosimo
Doreen Romanow *

In memory of
Edith Mae Whitworth
John Carruthers
George Wakeling
Carol Bennett
Doreen Romanow *

In memory of
Mr. Robert Chipman
Claudette Leclerc &
Robert Kennedy ^

In Memory of Philip de Carteret
Robin de Carteret

In memory of
Robert Conner Hrousalas
Laurie Thomson

In memory of Sally Knox
Lila Knox ^

In memory of Victoria Lakusta
Maurice and Victoria Lakusta

In memory of William Schroeder
Colleen and Richard Loewen
Frieda Peters
Marie Schroeder
Mary Flatt
Judith de Vries-Porteous

Say it with a Star

Alice, Denis, Aline, Darci, Hailey,
Jayden, Katiya, Moozer, Eric,
Michael, Marian and Mark
Angelle, Dave, Andrew, Kyara
and Bella

Angie, Devon, Charlee, Porter
and Major

Angie and Terry
Tammy Axelsson

Susan Bakos

Albert Baliet

Leslie Bear

Debbie Benson

Jenny Billey

Jenna Boholij

Audrey and Brian Book

Shirley Boychuk

Chantel Brandt

Madison & Riley Brouillette

Blair, Jane, Madison and
Riley Brouillette

Ryan Buechler

Bob Carr

Linda Connor

The Connor Family

Dawn Cyr

Danielle Denny

Danielle, Paul and Martha

Heather Desousa

Diana, Ryan and Alyssa

Chantel Didych-Evans

Lori Dyck

Sharon Finnen

Buella Fowler

May Giannico

Hendrika Granovsky

Babs and Jeff Jones

Ken & Joan, Bill & Karen,
Val & Charlie, Lori & George,
Heather & Mic, Scott & Janie,
Trev & Jenn and families

Rhonda, Ian, Brody and
Hannah Kitch

Amy Komus

Mandy & Ryan Kwasnica

Karen Lawless

Gayle Magnusson

Adair and Don Morrison

Sandra Newman

Mike Parker

The Poturica Family

The Poturica and
Stimpson Families

Pattie Regan

Shirley Render

Jim and Arlene Robinson

Karen Roth

Antonio Sacco

Ellen Schwab

Muriel and Gord Shaw

Alison Sharpe

Denis Simard

Nick Simmons

Maureen Smith

Dolly Sparks

Laurie Thomson

Michael and Lilia Thompson

Lianne Tregobov

Ben Wiebe

Brenda Wing

Nicole Fae Yakielashek

Adopt an Artefact

Jonathan Bence

Elizabeth Chipilski ^

Jeoffrey R. Chipman #

Scott Craig #

Tanya Dash

Charlene Dueck

Don and Martha Epstein #

Stewart Fay

Harry and Elvira Finnigan

Janele Frechette ^

Susan Johanneson

Ian King

Greg Klassen ^

Claudette Leclerc &
Robert Kennedy ^

Katy Livingstone

Manitoba Hydro

Fiona Odium

Shel Zolkewich

The Manitoba Museum Foundation

Donor Designated Gifts

Carol Bennett

Hugh Brown

Merrill E. Brown

Kevin M. Brownlee ^ #

John Carruthers

Francoise Collins *

Colin and Margaret Dawes

Judith de Vries-Porteous

Remi Desbiens

Joanne V. DiCosimo

Mary Flatt

Mr. Martin Freedman, Q.C.

Adèle Hempel ^

Michael and Shirley Hill

Denis and Tricia Hlynka

Gordon C. Keatch

Phyllis M. Kilpatrick

Lila Knox ^

T. G. Kucera

Maurice and Victoria Lakusta

Claudette Leclerc &
Robert Kennedy ^

Colleen and Richard Loewen

Margaret I. Morran

Frieda Peters

Diana B. Robson ^

Doreen Romanow *

Marie Schroeder

Hartley C. Schwark

Emöke J. Szathmáry, C.M. #

Hugh and Susan Taylor

Friend of the Museum

Hilda Wagstaffe

George Wakeling

George Waters

*Note – ^, * and # indicate Staff person, Volunteer and TMM or TMMF Board Member respectively*

MEMBERSHIP

Join Our Family

On a dark October evening, a record-setting 1,100 members arrived in their scariest Hallowe'en attire to attend our annual members' night. This event ensured that members were the first to see our latest temporary exhibit *Wrapped: The Mummy of Pesed*, and new Planetarium show *Stars of the Pharaohs*. In addition to these standard members' night offerings, we added trick-or-treating in the Museum Galleries.

This portion of the evening proved very popular among our guests, who took the time to express what fun they had: *"I loved the volunteers in period costumes in the galleries! Your generosity with the goody bags was especially wonderful. We are avid Schleich collectors and it is so great to have a little Bison herd now. Thank you so much, a job well done – especially given the unexpectedly high turnout."*

Enhanced activities and programming during members' night was only one way the Museum added value to its membership program this year. Partnering with the Winnipeg Foundation and the U.S. Consulate Winnipeg, the Museum produced an Ancient Egypt Activity Book,

designed by Red River College Design Intern Sarah Brazauskas during her time at the Museum. This booklet was produced as a members-only perk, and was distributed free of charge during members' night, and for the duration of *Wrapped: The Mummy of Pesed*. For the first time since Alloway World Exhibits was established, members received exclusive reduced admission rates to visit our temporary exhibit. This change was received favourably by members, and will be continued in the future.

Members continued to benefit from our participation with the Canadian Association of Science Centres,

Staff member Martina Hutchison and daughter Daphne volunteering at Members' Night



enjoying free or reduced admission to over 25 science centres across Canada, from the H.R. MacMillan Space Centre in Vancouver, to the Johnson GEO Centre in St. John's, and everything in between.

Efforts to enhance our membership program, in combination with long-established membership benefits, were well received by both new and returning members. At year end, our membership family consisted of 10,857 individuals. We look forward to working together over the coming year to further improve our membership program, and increase member engagement with the Museum.



Staff member Nicole Maier hands out bison toys to member children during trick-or-treating

THE MANITOBA MUSEUM FOUNDATION INC.

The Manitoba Museum is custodian of a collection of 2.9 million artefacts and natural history specimens that provide an information base from which exhibits are developed on themes reflective of Manitoba's heritage. In accordance with its Statement of Activities, the undertaking of The Manitoba Museum Foundation Inc. is restricted to developing, expending and administering a fund for exhibit replacement, special acquisitions and research for the purpose of promoting the objects of The Manitoba Museum, set

forth in The Manitoba Museum Act, and in the furtherance of its Mission.

In fiscal year 2013-2014, the Foundation supported the new acquisition of the Commemorative "Mann Medal" in the amount of \$1910.00. Following approval of a \$35,000 grant allocating the full Foundation annual grant budget to one project, the Foundation agreed to suspend funding to the project and allocate the funds to the 2014-2015 grant run in support of Museum exhibit replacement and research projects.

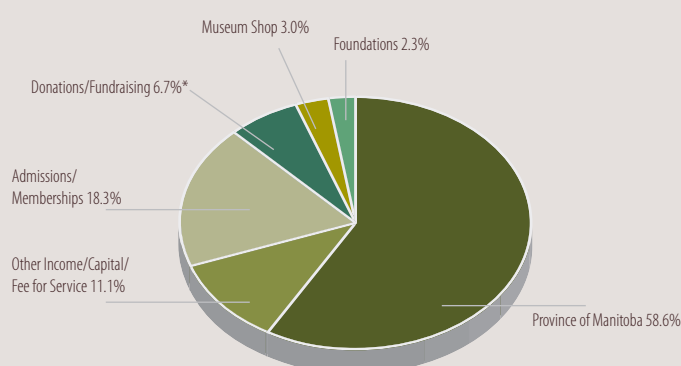
A capital renewal planning process is currently underway that will result in a Capital/Endowment Campaign to be launched in the next few years ensuring Manitoba's past has a solid future.



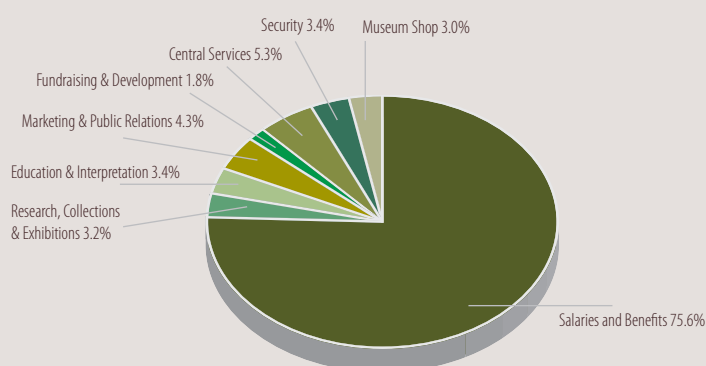
Ken Ross
President, Board of Directors
The Manitoba Museum Foundation Inc.

THE MANITOBA MUSEUM GENERAL FUND

PERCENTAGE OF REVENUE TOTAL 100%



PERCENTAGE OF EXPENDITURES TOTAL 100%



*Does not reflect \$220,569 donations of goods and services in kind

INDEPENDENT AUDITORS' REPORT

We have audited the accompanying non-consolidated financial statements of The Manitoba Museum which comprise the non-consolidated statement of financial position as at March 31, 2014, the nonconsolidated statement of operations and changes in fund balance and cash flows for the year ended then ended, and notes, comprising a summary of significant accounting policies and other explanatory information.

Management's Responsibility for the Non-Consolidated Financial Statements

Management is responsible for the preparation and fair presentation of these non-consolidated financial statements in accordance with Canadian accounting standards for not-for-profit organizations, and for such internal control as management determines is necessary to enable the preparation of non-consolidated financial statements that are free from material misstatement, whether due to fraud or error.

Auditors' Responsibility

Our responsibility is to express an opinion on these non-consolidated financial

statements based on our audit. We conducted our audit in accordance with Canadian generally accepted auditing standards. Those standards require that we comply with ethical requirements and plan and perform the audit to obtain reasonable assurance about whether the non-consolidated financial statements are free from material misstatement.

An audit involves performing procedures to obtain audit evidence about the amounts and disclosures in the non-consolidated financial statements. The procedures selected depend on our judgment, including the assessment of the risks of material misstatement of the non-consolidated financial statements, whether due to fraud or error. In making those risk assessments, we consider internal control relevant to the entity's preparation and fair presentation of the non-consolidated financial statements in order to design audit procedures that are appropriate in the circumstances, but not for the purpose of expressing an opinion on the effectiveness of the entity's internal control. An audit also includes evaluating the appropriateness of accounting policies

used and the reasonableness of accounting estimates made by management, as well as evaluating the overall presentation of the non-consolidated financial statements.

We believe that the audit evidence we have obtained is sufficient and appropriate to provide a basis for our audit opinion.

Opinion

In our opinion, the non-consolidated financial statements present fairly, in all material respects, the non-consolidated financial position of The Manitoba Museum as at March 31, 2014, and its nonconsolidated results of operations and its non-consolidated cash flows for the year then ended in accordance with Canadian accounting standards for not-for-profit organizations.

Chartered Accountants

Signed
"KPMG LLP"

May 26, 2014
Winnipeg, Canada

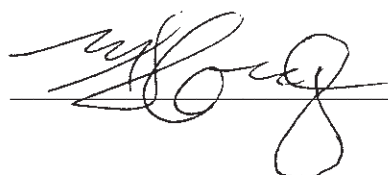
NON-CONSOLIDATED STATEMENT OF FINANCIAL POSITION


March 31, 2014, with comparative information for 2013

	General Fund	Properties Fund	Other Restricted Funds	2014 Total	2013 Total
ASSETS					
Current assets:					
Cash	\$ 663,205	\$ —	\$ —	\$ 663,205	\$ 373,076
Restricted cash (note 3)	500,000	—	—	500,000	500,000
Accounts receivable:					
Grants	36,250	—	77,869	114,119	445,426
Other	45,279	—	—	45,279	35,486
Due from The Manitoba Museum Foundation Incorporated	3,725	—	—	3,725	—
Inventories	32,115	—	—	32,115	33,613
Prepaid expenses	64,711	—	—	64,711	37,592
Inter-fund loans (note 11)	(425,799)	(184,176)	609,975	—	—
	919,486	(184,176)	687,844	1,423,154	1,425,193
Properties (note 4)	—	22,399,811	—	22,399,811	22,207,174
Accrued benefit asset (note 6)	1,759,442	—	—	1,759,442	1,427,310
	\$ 2,678,928	\$ 22,215,635	\$ 687,844	\$ 25,582,407	\$ 25,059,677
LIABILITIES AND FUND BALANCES					
Current liabilities:					
Due to The Manitoba Museum Foundation Incorporated	\$ —	\$ —	\$ —	\$ —	\$ 1,286
Accounts payable and accrued liabilities (note 7)	859,340	—	—	859,340	726,456
	859,340	—	—	859,340	727,742
Accrued benefit liability (note 6)	613,033	—	—	613,033	563,101
Fund balance:					
Invested in properties	—	22,215,635	—	22,215,635	22,008,461
Externally restricted	—	—	187,844	187,844	768,140
Externally restricted working capital reserve (note 3)	—	—	500,000	500,000	500,000
Internally restricted (note 8)	1,303,323	—	—	1,303,323	878,640
Unrestricted	(96,768)	—	—	(96,768)	(386,407)
	1,206,555	22,215,635	687,844	24,110,034	23,768,834
	\$ 2,678,928	\$ 22,215,635	\$ 687,844	\$ 25,582,407	\$ 25,059,677

See accompanying notes to non-consolidated financial statements.

On behalf of the Board:

 Governor

 Governor

NON-CONSOLIDATED STATEMENT OF OPERATIONS AND CHANGES IN FUND BALANCE

Year ended March 31, 2014, with comparative information for 2013

	2014							2013		
	General Fund		Total	Properties	Restricted Funds		2014 Total	General Fund	Restricted Funds	2013 Total
Unrestricted	Internally Restricted	Special projects			Total					
Revenue:										
Grants (note 9)	\$ 3,307,500	\$ 50,000	\$ 3,357,500	\$ 25,000	\$ —	\$ 25,000	\$ 3,382,500	\$ 3,313,950	\$ 30,800	\$ 3,344,750
Fundraising (note 10)	379,734	—	379,734	—	—	—	379,734	330,760	—	330,760
Contributions	—	188,506	188,506	—	270,304	270,304	458,810	145,000	538,269	683,269
Admission	870,366	—	870,366	—	—	—	870,366	1,011,115	—	1,011,115
Museum shop	168,543	—	168,543	—	—	—	168,543	265,792	—	265,792
Contract services	18,211	—	18,211	—	—	—	18,211	12,506	—	12,506
Donations-in-kind	220,569	—	220,569	44,770	—	44,770	265,339	109,535	155,600	265,135
Memberships	165,284	—	165,284	—	—	—	165,284	198,593	—	198,593
Other income	388,140	129,649	517,789	—	—	—	517,789	492,178	—	492,178
	5,518,347	368,155	5,886,502	69,770	270,304	340,074	6,226,576	5,879,429	724,669	6,604,098
Expenses:										
Salaries and employee benefits	3,717,771	164,051	3,881,822	—	—	—	3,881,822	4,126,073	—	4,126,073
Research, collections and exhibitions	83,144	83,157	166,301	—	108,735	108,735	275,036	140,174	158,819	298,993
Education and interpretation	176,842	—	176,842	—	—	—	176,842	188,454	—	188,454
Marketing and public relations	210,323	10,635	220,958	—	92,318	92,318	313,276	218,255	88,148	306,403
Fundraising and development	91,920	2,153	94,073	—	3,500	3,500	97,573	77,368	—	77,368
Central services	238,132	37,494	275,626	—	32,519	32,519	308,145	246,496	48,798	295,294
Staff development and opportunity fund	21,820	6,353	28,173	—	—	—	28,173	25,483	—	25,483
Security	176,402	—	176,402	—	—	—	176,402	174,189	—	174,189
Museum shop	152,059	—	152,059	—	—	—	152,059	233,359	—	233,359
Goods and services received in-kind	220,569	—	220,569	—	—	—	220,569	109,535	—	109,535
Capital planning costs	—	—	—	8,834	—	8,834	8,834	—	18,765	18,765
Amortization of properties	—	—	—	528,845	—	528,845	528,845	—	533,182	533,182
	5,088,982	303,843	5,392,825	537,679	237,072	774,751	6,167,576	5,539,386	847,712	6,387,098
Excess (deficiency) of revenue over expenses before the undernoted	429,365	64,312	493,677	(467,909)	33,232	(434,677)	59,000	340,043	(123,043)	217,000
Adjustment to accrued benefit asset (note 6)	332,132	—	332,132	—	—	—	332,132	152,960	—	152,960
Adjustment to accrued benefit liability (note 6)	(49,932)	—	(49,932)	—	—	—	(49,932)	(49,241)	—	(49,241)
Excess (deficiency) of revenue over expenses	711,565	64,312	775,877	(467,909)	33,232	(434,677)	341,200	443,762	(123,043)	320,719
Fund balance, beginning of year	(386,407)	878,640	492,233	22,008,461	1,268,140	23,276,601	23,768,834	77,674	23,370,441	23,448,115
Transfer of funds for purchase of properties	(41,926)	(19,629)	(61,555)	675,083	(613,528)	61,555	—	(29,203)	29,203	—
Transfer of funds for internally restricted projects (note 8)	(380,000)	380,000	—	—	—	—	—	—	—	—
Fund balance, end of year	\$ (96,768)	\$ 1,303,323	\$ 1,206,555	\$ 22,215,635	\$ 687,844	\$ 22,903,479	\$ 24,110,034	\$ 492,233	\$ 23,276,601	\$ 23,768,834

See accompanying notes to non-consolidated financial statements.

NON-CONSOLIDATED STATEMENT OF CASH FLOWS

Year ended March 31, 2014, with comparative information for 2013

	2014	2013
Cash provided by (used in):		
Operating activities:		
Excess of revenue over expenses	\$ 341,200	\$ 320,719
Items not affecting cash:		
Amortization	528,845	533,182
Change in non-cash operating working capital:		
Accounts receivable	321,514	400,445
Due from/to The Manitoba Museum Foundation Incorporated	(5,011)	(7,462)
Inventories	1,498	18,964
Prepaid expenses	(27,119)	(3,003)
Accrued benefit asset	(332,132)	(152,960)
Accounts payable and accrued liabilities	132,884	(118,272)
Accrued benefit liability	49,932	49,241
	1,011,611	1,040,854
Investing activities:		
Purchase of properties	(721,482)	(741,340)
Increase in cash	290,129	299,514
Cash, beginning of year	373,076	73,562
Cash, end of year	\$ 663,205	\$ 373,076

See accompanying notes to non-consolidated financial statements.

NOTES TO NON-CONSOLIDATED FINANCIAL STATEMENTS

Year ended March 31, 2014

1. GENERAL:

The Manitoba Museum (the Museum) is a public, not-for-profit organization operating programs to preserve the heritage of Manitoba. The Museum is incorporated by a Special Act of Manitoba Legislation. The Museum is a registered charity under the *Income Tax Act* (Canada) and is therefore exempt from income taxes.

2. SIGNIFICANT ACCOUNTING POLICIES:

The financial statements have been prepared by management in accordance with Canadian accounting standards for not-for-profit organizations and include the following significant accounting policies.

- (a) **Basis of presentation:** The Museum exercises control over The Manitoba Museum Foundation Incorporated (the Foundation) by virtue of its abilities to appoint all of the Foundation's Board of Directors.

The Foundation's financial results have not been consolidated in the Museum's financial statements. Financial statements for the Foundation are prepared separately. A financial summary of the Foundation's financial position as at March 31, 2014 and March 31, 2013 and the results of operations for the years then ended are as follows:

	March 31, 2014	March 31, 2013
Assets	\$ 101,650	\$ 95,716
Liabilities	\$ 5,225	\$ 1,500
Unrestricted net assets	96,425	94,216
	\$ 101,650	\$ 95,716
Results of operations:		
Revenue	\$ 49,906	\$ 50,060
Operating expenses	47,697	66,565
Excess (deficiency) of revenue over expenses	\$ 2,209	\$ (16,505)

- (b) **Fund accounting:** The Museum follows the restricted fund method of accounting for contributions.

Revenue and expenses related to program and project delivery and administrative activities are reported in the General Fund.

The Properties Fund includes transactions related to the funding and acquisition of the Museum's properties, including artefacts donated to the Museum.

Other Restricted Funds consists of Special Projects Fund and the Working Capital Reserve Fund. The Special Projects Fund reports the assets, liabilities, revenues, and expenses related to restricted resources to be used for specific projects undertaken by the Museum. The Working Capital Reserve Fund reports the assets, liabilities, revenues and expenses restricted for the purpose of providing the Museum with a working capital reserve. These reserve funds may be accessed for cash flow purposes over the course of a given year but must be replenished prior to year end (note 3).

- (c) **Inventories:** Inventories are valued at the lower of cost and net realizable value.
- (d) **Properties:** Properties are capitalized on the following basis:
- (i) History and ethnology artefacts purchased are recorded at cost and those accepted as donations are at estimated value on the date of receipt by the Museum's curatorial staff or independent appraiser.
 - (ii) Natural history artefacts are collected by the Museum's staff on field trips. The related field trip costs are included in the cost of properties. No salary costs related to the collecting and preparing of the specimens are capitalized. Natural history artefacts are also accepted as donations and are at estimated value on the date of receipt by the Museum's curatorial staff or independent appraiser.
 - (iii) Archaeology artefacts on hand April 1, 1989 are recorded at a nominal amount of \$1. Subsequent to April 1, 1989, artefacts purchased are recorded at cost and those accepted as donations are valued at estimated value on the date of receipt by the Museum's curatorial staff or independent appraiser. Artefacts collected by the Museum's staff are recorded at the cost of the related collection project, excluding salary costs related to their collection and preparation.
 - (iv) The cost of exhibits constructed and refurbished on the premises are capitalized at cost and include an allocation of staff salaries and related costs.
 - (v) Furnishings and equipment purchases are capitalized at cost.
 - (vi) Library books and periodicals purchased are capitalized at cost and those books accepted as donations are valued at a minimum of \$10 per book.
- The carrying value of assets disposed of and the portions of exhibits removed to facilitate refurbishment are removed from the accounts and charged to income in the year of disposal or refurbishment. Amortization expense is reported in the Properties Fund. Amortization is provided using the declining balance method at the following annual rates:

Asset	Rate
Exhibits	5%
Furnishings and equipment	12.5%
Library	5%
Leasehold improvements	5%

Exhibits in progress are stated at cost and no amortization is taken until the assets are placed in use.

- (e) **Employee future benefits:** The Museum has a defined benefit pension plan and a long service benefit plan covering substantially all of its employees. The transitional asset and obligations are being amortized over the average remaining service period of active employees expected to receive benefits under the benefit plans. As well, for each of the plans, the excess of unamortized gains and losses over 10 percent of the greater of the fair value of plan assets and the benefit obligations is being amortized over the average remaining service period of active employees expected to receive benefits under the benefit plan. The average remaining service period for both plans is 10 years in 2014 (2013 — 10 years). The cost of pensions and other retirement benefits earned by employees is determined using the projected benefit method pro rated on service and management's best estimate of expected plan investment performance, salary escalation and retirement ages of employees. The discount rate used to determine the accrued benefit obligation was determined by reference to market interest rates at the measurement date on high-quality debt instruments with cash flows that match the timing and amount of expected benefit payments. For purposes of calculating the expected return on plan assets, those assets are valued at fair value.
- (f) **Recognition of revenue:** Restricted contributions related to general operations are recognized as revenue of the General Fund in the year in which the related expenses are incurred. All other restricted contributions are recognized as revenue of the appropriate restricted fund in the year received or receivable if the amount can be reasonably estimated and collection is reasonably assured.
- Unrestricted contributions are recognized as revenue of the General Fund in the year received or receivable if the amount to be received can be reasonably estimated and collection is reasonably assured.
- Investment income on investments held in the Special Projects Fund and the Working Capital Reserve Fund is recorded as income in the General Fund.
- Admissions and other revenue are taken into income when earned.
- (g) **Donations in-kind:** Donated materials and services are recorded when the materials or services would have to be purchased if they were not donated and where an estimate of fair market value can be reasonably determined.
- (h) **Contributed service:** Volunteers contribute in excess of 17,000 hours per year to assist the Museum in carrying out its programs and activities. Because of the difficulty of determining their fair value, contributed volunteer services are not recognized in the financial statements.
- The Museum occupies space owned by the Province of Manitoba and managed by The Manitoba Centennial Centre Corporation on a rent-free basis. The Manitoba Centennial Centre Corporation receives a grant directly from the Province of Manitoba, Department of Culture, Heritage and Tourism to cover all occupancy costs pertaining to the premises.
- (i) **Financial instruments:** Financial instruments are recorded at fair value on initial recognition. Freestanding derivative instruments that are not in a qualifying hedging relationship and equity instruments that are quoted in an active market are subsequently measured at fair value. All other financial instruments are subsequently recorded at cost or amortized cost, unless management has elected to carry the instruments at fair value. The Museum has not elected to carry any such financial instruments at fair value.
- Transaction costs incurred on the acquisition of financial instruments measured subsequently at fair value are expenses as incurred. All other financial instruments are adjusted by transaction costs incurred on acquisition and financing costs, which are amortized using the straight-line method.
- (j) **Use of estimates:** The preparation of financial statements requires management to make estimates and assumptions that affect the reported amounts of assets and liabilities, the disclosure of contingent assets and liabilities at the date of the financial statements and the reported amounts of revenues and expenses during the period. Significant items subject to such estimates and assumptions include the carrying amount of properties, accrued benefit asset and accrued benefit liability. Actual results could differ from those estimates.

3. WORKING CAPITAL RESERVE FUND:

On November 10, 2004, the Museum entered into a five year funding agreement with Arts Stabilization Manitoba, Inc. (ASM). Under the funding agreement, ASM had provided a total of \$500,000 to establish a Working Capital Reserve Fund. The restricted cash of the Working Capital Reserve Fund may be accessed for cash flow purposes over the course of a given year, but must be replenished prior to the Museum's fiscal year end, except as otherwise approved by ASM in accordance with the funding agreement. At March 31, 2014, the Museum had \$500,000 (2013 — \$500,000) held as restricted cash.

On November 10, 2009, the term of the funding agreement ended. Based on the terms and conditions of this funding agreement, the Museum must continue to maintain the \$500,000 of restricted cash in the Working Capital Reserve Fund at the end of each fiscal year, in perpetuity.

4. PROPERTIES:

	Cost	Accumulated amortization	2014 Net book value	2013 Net book value
Artefacts	\$ 13,167,748	\$ —	\$ 13,167,748	\$ 13,118,895
Exhibits	10,249,194	6,237,058	4,012,136	3,420,540
Furnishings and equipment	3,723,955	2,781,765	942,190	985,465
Library	798,582	546,624	251,958	259,899
Leasehold improvements	10,020,649	5,994,870	4,025,779	4,221,496
Exhibits in progress	—	—	—	200,879
	\$ 37,960,128	\$ 15,560,317	\$ 22,399,811	\$ 22,207,174

Details of changes in the cost of properties are as follows:

	2014	2013
Development of exhibits:		
Materials and supplies	\$ 561,744	\$ —
Acquisition of properties:		
Purchases:		
Artefacts	4,083	53,044
Furnishings and equipment	90,474	327,144
Exhibits in progress	—	200,879
Library	5,053	4,673
Leasehold improvements	15,358	—
	676,712	585,740
Donations in-kind:		
Artefacts	44,770	155,600
Increase in properties	721,482	741,340
Properties, beginning of year, at cost	37,238,646	36,497,306
Properties, end of year, at cost	\$ 37,960,128	\$ 37,238,646

5. BANK INDEBTEDNESS:

The Museum has an operating line of credit to a maximum of \$800,000. The operating line of credit is due on demand, bears interest at bank prime and is unsecured. The Museum had not utilized the operating line of credit at March 31, 2014 and March 31, 2013.

6. EMPLOYEE FUTURE BENEFITS:

	2014		2013	
	Defined benefit pension plan	Long service benefit plan	Defined benefit pension plan	Long service benefit plan
Accrued benefit obligation	\$ 16,636,369	\$ 630,100	\$ 16,162,920	\$ 610,220
Fair value of plan assets	16,266,408	—	14,146,731	—
Funded status — plan deficit	(369,961)	(630,100)	(2,016,189)	(610,220)
Unamortized actuarial loss	2,129,403	17,067	3,443,499	47,119
Accrued benefit asset (accrued benefit liability)	\$ 1,759,442	\$ (613,033)	\$ 1,427,310	\$ (563,101)

7. ACCOUNTS PAYABLE AND ACCRUED LIABILITIES:

Included in accounts payable and accrued liabilities are government remittances payable of \$3,890 (2013 — \$13,813), which includes amounts payable for federal and provincial sales tax and payroll related taxes.

8. FUND BALANCES – INTERNALLY RESTRICTED:

The Board of Governors can internally restrict net assets stipulating that these net assets be used for a specific purpose. These internally restricted amounts are not available for other purposes without approval by the Board of Governors.

The internally restricted net assets of the General Fund are comprised of the following:

	2014	2013
Rental Facilities – Equipment Purchases	\$ 6,834	\$ 7,865
Training and Opportunity	131,896	8,249
Say it with a Star	31,943	17,607
Publications Committee	5,908	3,262
Exhibits	273,289	169,925
Nonsuch Conservation	34,397	35,720
I.T. Upgrade	115,252	72,746
Provision for Pension Shortfall	259,418	278,016
Capital Planning Projects	382,500	232,500
New Exhibitions Fund	49,040	37,750
Revenue Development Projects	12,846	15,000
	\$ 1,303,323	\$ 878,640

9. GRANTS:

	2014		2013	
	General Fund	Properties/ Special Projects	General Fund	Properties/ Special Projects
Province of Manitoba	\$ 3,175,000	\$ —	\$ 3,125,000	\$ 25,000
HBC History Foundation:				
Grant	130,000	—	130,000	—
The Manitoba Museum Foundation Incorporated	—	—	—	5,800
The City of Winnipeg	52,500	—	55,350	—
The Winnipeg Foundation	—	25,000	3,600	—
	\$ 3,357,500	\$ 25,000	\$ 3,313,950	\$ 30,800

10. FUNDRAISING:

	2014		2013	
	General Fund	Properties Fund	General Fund	Properties Fund
Individual	\$ 95,172	\$ —	\$ 63,700	\$ —
Special events	125,857	—	113,922	—
Sponsorship	158,705	—	153,138	—
	\$ 379,734	\$ —	\$ 330,760	\$ —

11. RELATED PARTY TRANSACTIONS:

During the year, the following transactions were entered into with The Manitoba Museum Foundation Incorporated:

	2014	2013
Grants received	\$ 35,000	\$ 55,750
Refund of unspent grants in the Special Projects Fund	(1,884)	(1,801)
Administration fee recovery – included in other income of the General Fund	1,025	1,025
Research, collections and exhibits support – included in other income of the General Fund	10,000	10,000

These transactions are in the normal course of operations and are measured at the exchange amount, which is the amount of consideration established and agreed to by the related parties.

The inter-fund loans are non-interest bearing, due on demand, have no specified terms of repayment and are unsecured.

12. FINANCIAL RISKS:

The Museum believes that it is not exposed to significant interest-rate, market or credit risk arising from its financial instruments.

In relation to liquidity risk, which is the risk that the Museum will be unable to fulfill its obligations on a timely basis or at a reasonable cost, the Museum manages its liquidity risk by monitoring its operating requirements. The Museum prepares budget and cash forecasts to ensure it has sufficient funds to fulfill its obligations. There has been no change to the risk exposures from 2013.

NON-CONSOLIDATED SCHEDULE – OTHER RESTRICTED FUNDS SUMMARY

Year ended March 31, 2014

	Fund balance March 31, 2013	Project revenue (refund/ transfer)	Project expenses	Inter-fund transfers	Fund balance March 31, 2014
SPECIAL PROJECTS FUND:					
Government of Canada grants:					
Young Canada Works	\$ —	\$ 8,460	\$ 8,460	\$ —	\$ —
Canada Summer Jobs	—	4,049	4,049	—	—
Canadian History Fur Trade Program	—	9,961	9,245	—	716
Peatlands Research – STIP	—	4,772	6,350	(1,578)	—
Cafe Scientifique	—	10,000	7,326	—	2,674
Province of Manitoba:					
Building Accessibility	3,655	16,500	—	16,057	4,098
Sipiwek Archaeology Project	3,072	1,505	4,482	—	95
200 Amp Service	—	18,000	(875)	18,875	—
The Manitoba Museum Foundation Incorporated:					
Parklands Gallery – new features	897	—	14	—	883
Science Gallery exhibits	461	—	—	—	461
Two Eagles Burial Cache	178	—	—	—	178
Museum Gallery exhibits	7,280	—	—	—	7,280
Museums Diorama Renewal	3,278	—	—	3,278	—
Elm Creek Meteorite Display	163	(163)	—	—	—
Prairie Pollination Exhibit Video	1,627	—	1,627	—	—
GRASAC Digital Research Commun	401	—	401	—	—
Oral History Project	1,704	—	1,704	—	—
Dioramas Pilot Technological Upgrade	—	3,600	5,332	(1,700)	(32)
Mann Medal Acquisition	—	1,910	—	1,910	—
Manitoba People and Places Gallery	—	35,000	—	—	35,000
Other grants/special projects:					
Repatriation budget	1,155	—	—	—	1,155
Granville Lake Oral History	—	1,212	1,212	—	—
Manitoba Hydro – Large Burial Cache	125	—	9	—	116
Vertebrate research publication	3,087	—	434	—	2,653
Manitoba Robot Games	8,010	24,704	27,108	—	5,606
Nonsuch maintenance	35,177	—	—	—	35,177
Lake Winnipeg – Shared Solutions	552,917	10,000	(12,108)	575,025	—
Alloway World Exhibitions	19,349	30,000	615	—	48,734
Culture on Every Corner	20,349	7,500	21,567	—	6,282
HBC History Foundation – Curator	15,779	—	5,772	—	10,007
Designated Collection Acquisition	613	—	—	613	—
Collections Database Technical Upgrade	2,000	—	—	—	2,000
Sipiwek Display Case	—	—	1,645	—	(1,645)
Sipiwek Lake	—	27,575	18,880	1,048	7,647
Berens Family Collection Picture Book	—	3,000	—	—	3,000
Wrapped Exhibit – Consulate Funding	—	3,500	3,500	—	—
Nice Women Don't Want The Vote	—	10,000	—	—	10,000
Lord Selkirk Collection Acquisition Shipping	—	3,000	—	—	3,000
Treaty Exhibit – Parklands Gallery	—	5,000	—	—	5,000
Stories of the Old Ones	—	2,000	—	—	2,000
Prairie Pollination Virtual Exhibit	3,747	—	3,747	—	—
Prairie Pollination VMC	—	29,256	39,173	—	(9,917)
Braiding Histories	83,116	(37)	77,403	—	5,676
Total Special Projects Fund	768,140	270,304	237,072	613,528	187,844
Working Capital Reserve Fund:					
Arts Stabilization Manitoba, Inc. (note 3)	500,000	—	—	—	500,000
Total other restricted funds	\$ 1,268,140	\$ 270,304	\$ 237,072	\$ 613,528	\$ 687,844

OUR VISION

Redefining the museum experience;
Sparking the imagination;
Transforming how we relate to the world.

OUR MISSION

To preserve the heritage of Manitoba for present and future generations;
To seek, acquire, and share knowledge of Manitoba's history, culture, and natural world with Manitobans and others; and
To inspire personal discovery, appreciation, and understanding of Manitoba, the world, and our universe.

OUR VALUES

Respect for individual and community diversity
Integrity in research and communications
Openness to new ideas and knowledge exchange
Inclusiveness (to engage the public in meaningful dialogue)
Responsible stewardship (public trust)
Prudent management and use of institutional assets
Commitment to social responsibility
Respect for the environment



190 Rupert Avenue
Winnipeg, Manitoba, Canada R3B 0N2
phone 204.956.2830 • fax 204.942.3679
email info@manitobamuseum.ca
www.manitobamuseum.ca

